

APPENDIX 3

Future Projection Scenarios HARS Suitability Ratio Maps, Dredged Material Testing Program BSAFs

- **2,3,7,8-TCDD (pages 2 to 7) and Total PCB (pages 8 to 17)**
- **1998-99 annual average (pages 2 and 8)**
- **1998-2002 four-year average (pages 3 and 9)**
- **2022-23 current year annual average (pages 4 and 10)**
- **2029-2030 future without further action annual average (pages 5 and 11)**
- **2038-39 future nine years after simulated completion of Lower Passaic River Superfund RODS (pages 6 and 12)**
- **2038-39 future nine years after simulated completion of Lower Passaic River Superfund RODS plus complete remediation of the Lower Hackensack River and Newark Bay Study Area (pages 7 and 13)**

Results for DMT BSAF
to HARS Ecological/Matrix Comparison

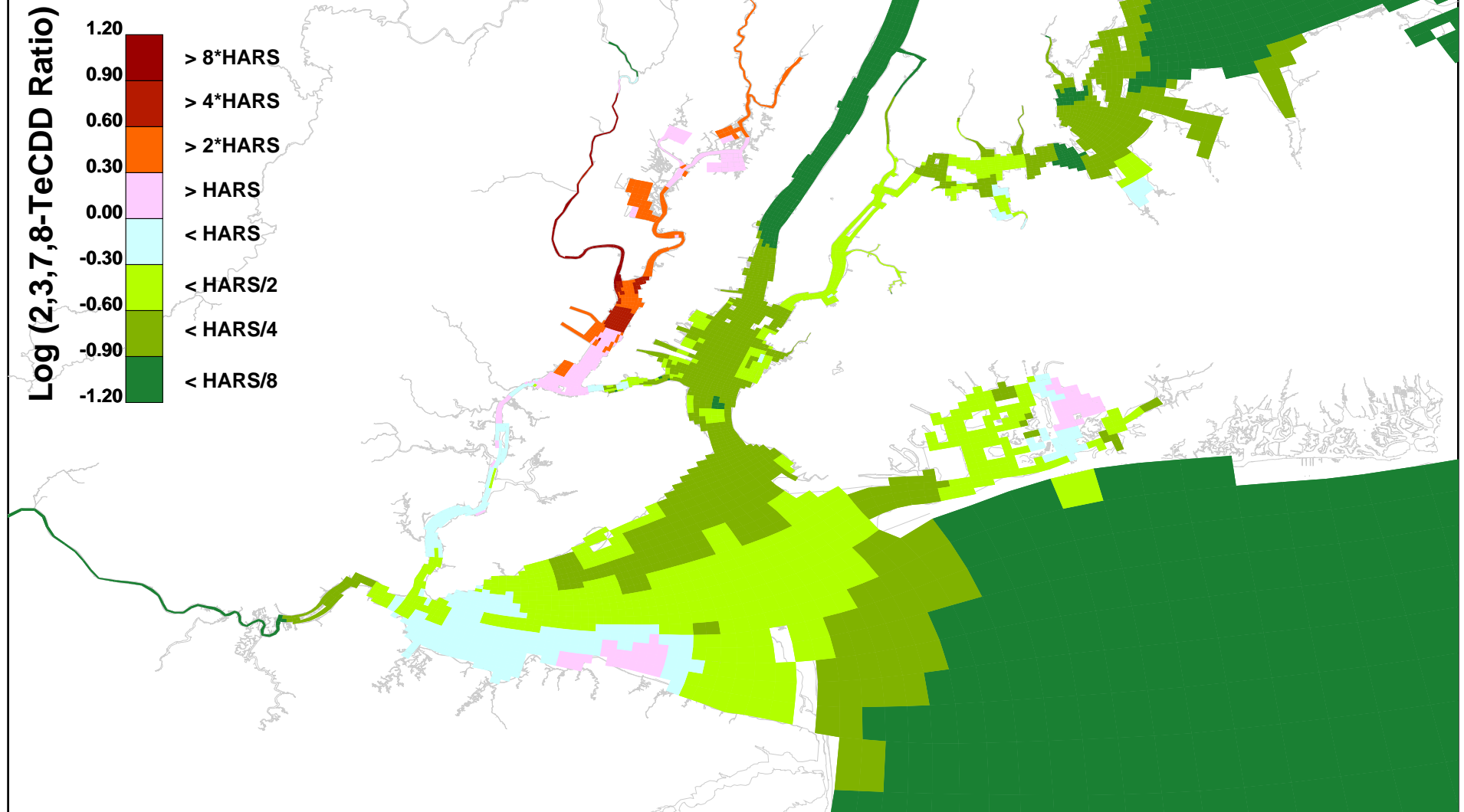


Figure 1. 2,3,7,8-TeCDD, Sediment Bed Depth Averaged, Calibration, 1998-1999

Results for DMT BSAF
to HARS Ecological/Matrix Comparison

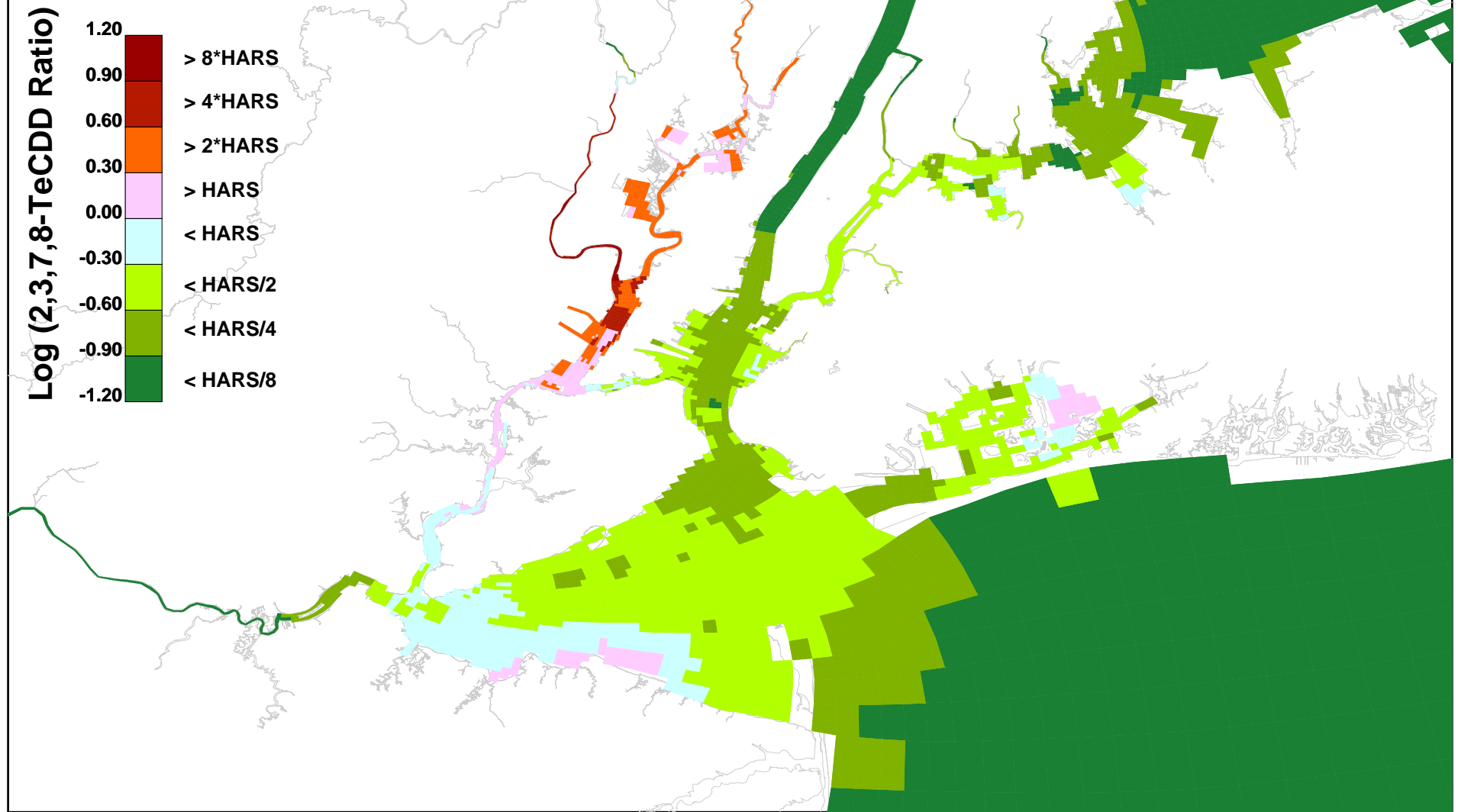


Figure 2. 2,3,7,8-TeCDD, Sediment Bed Depth Averaged, Calibration, 1998-2002

Results for DMT BSAF
to HARS Ecological/Matrix Comparison

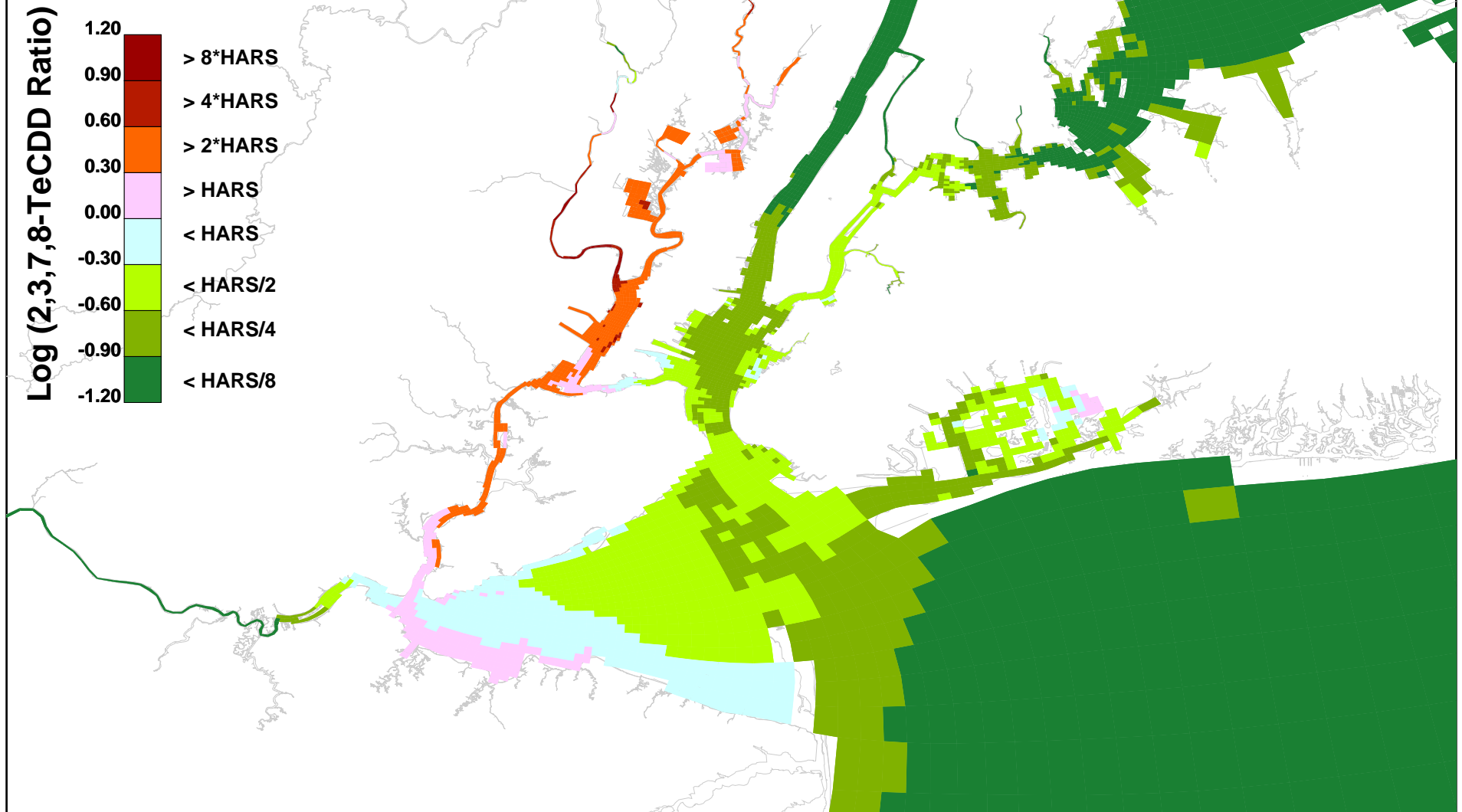


Figure 3. 2,3,7,8-TeCDD, Sediment Bed Depth Averaged, Projection PROJ01, 2022-2023

Results for DMT BSAF
to HARS Ecological/Matrix Comparison

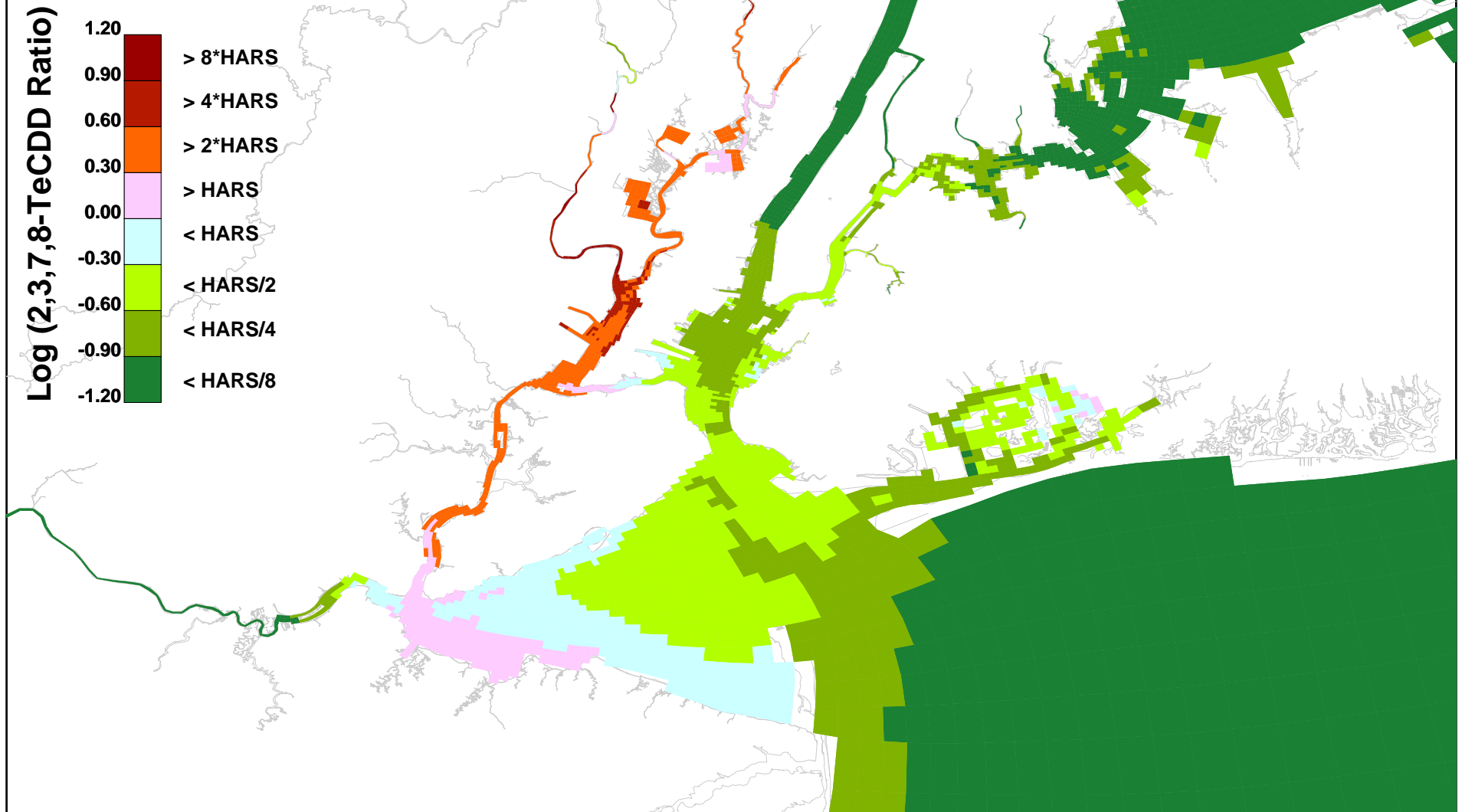


Figure 4. 2,3,7,8-TeCDD, Sediment Bed Depth Averaged, Projection PROJ01, 2029-2030

Results for DMT BSAF
to HARS Ecological/Matrix Comparison

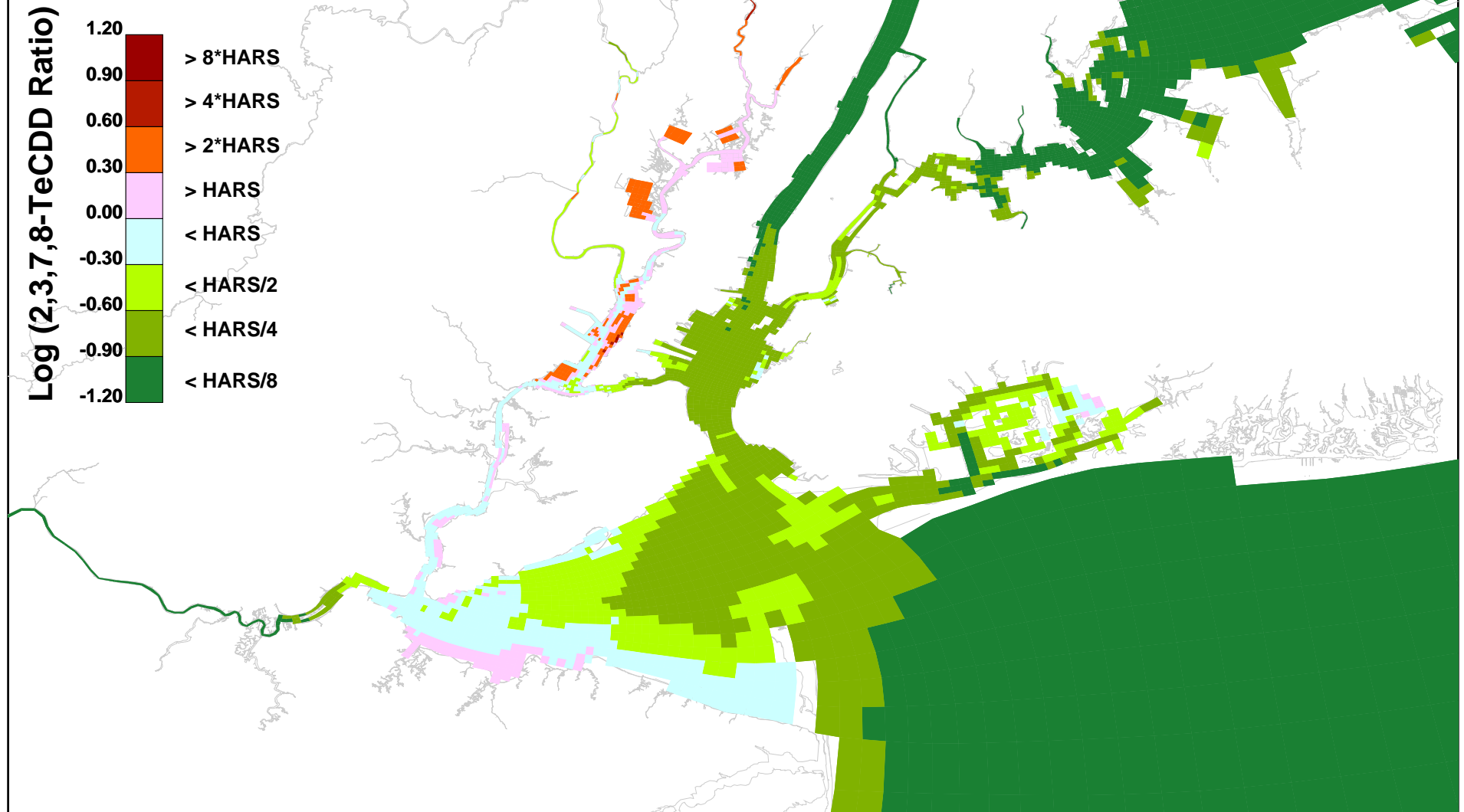


Figure 5. 2,3,7,8-TeCDD, Sediment Bed Depth Averaged, Projection PROJ01, 2038-2039

Results for DMT BSAF
to HARS Ecological/Matrix Comparison

Log (2,3,7,8-TeCDD Ratio)

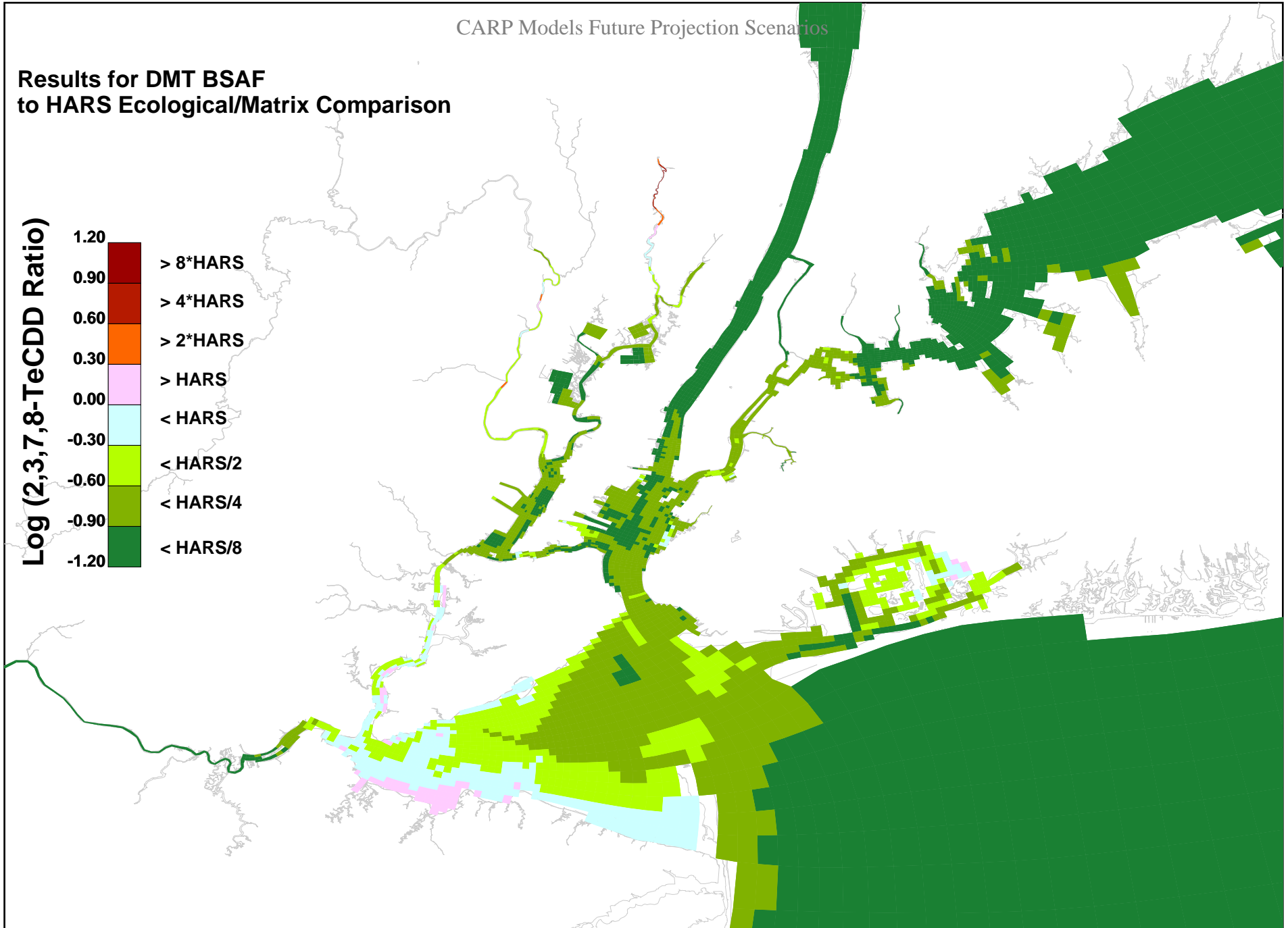
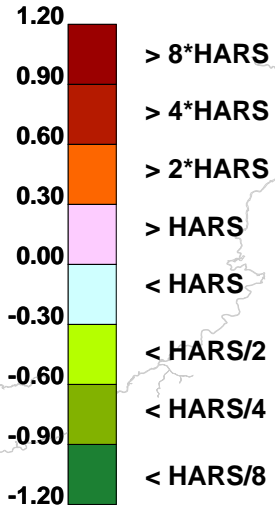


Figure 6. 2,3,7,8-TeCDD, Sediment Bed Depth Averaged, Projection PROJ02, 2038-2039

Total PCB Estimated as
 $2 * (Di+Tetra+Hexa+Octa)$
Results Doubled for DMT BSAF
to HARS Human Health Comparison

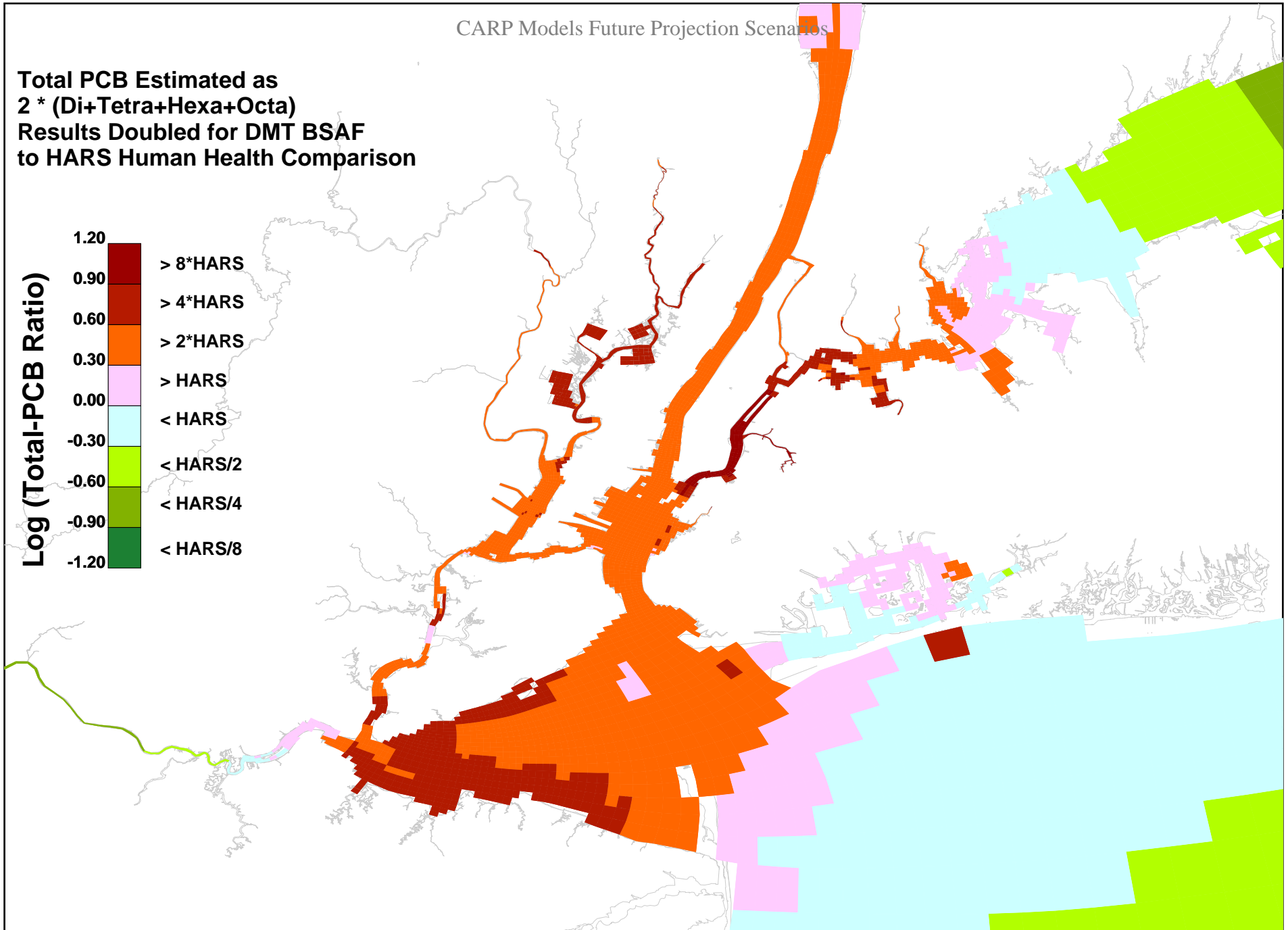
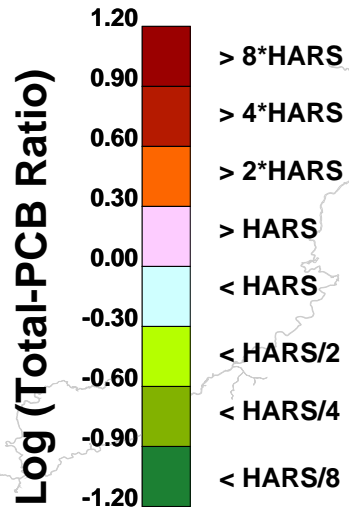


Figure 1. Total-PCB, Sediment Bed Depth Averaged, Calibration, 1998-1999

Total PCB Estimated as
 $2 * (Di+Tetra+Hexa+Octa)$
Results Doubled for DMT BSAF
to HARS Human Health Comparison

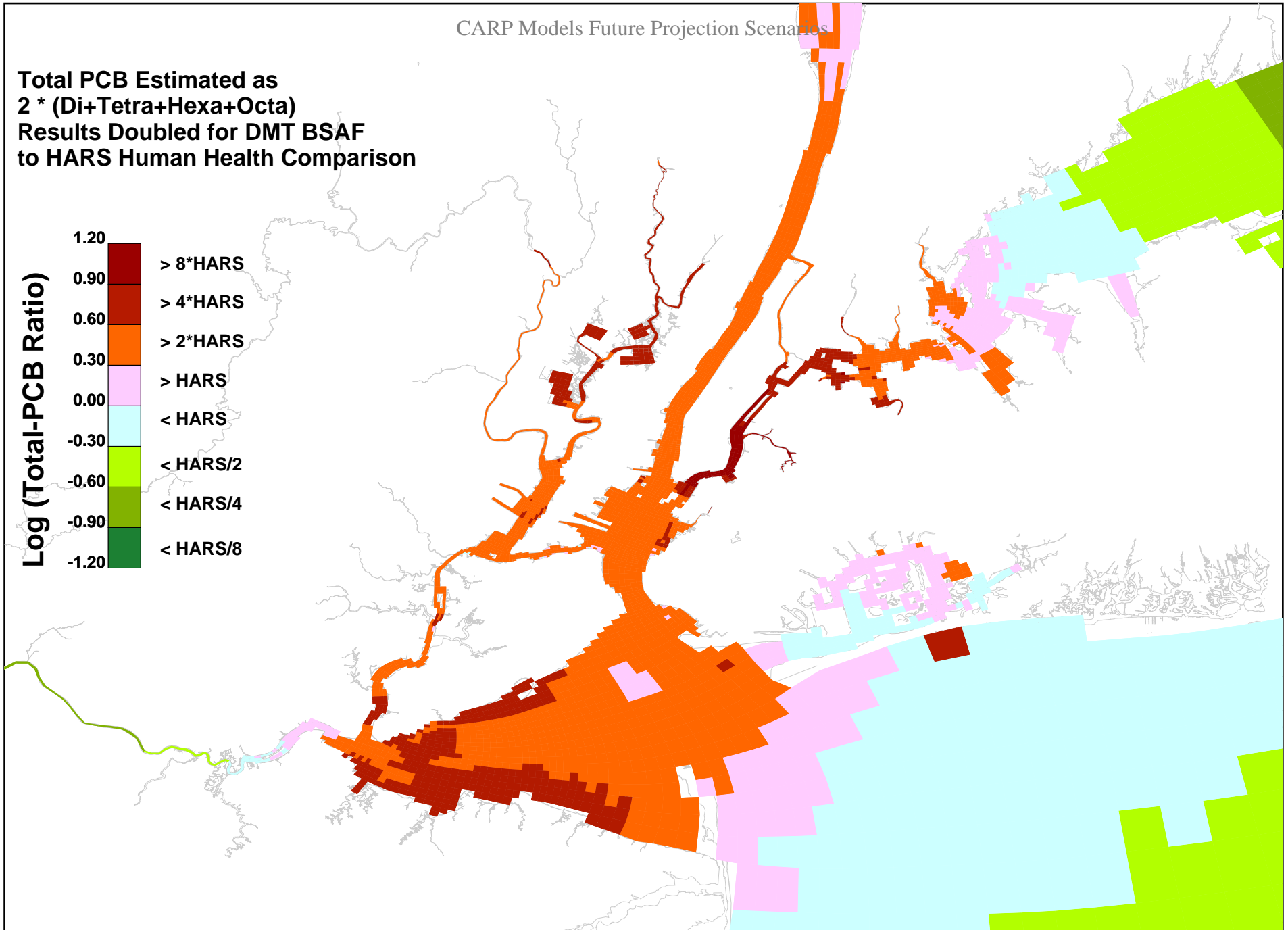
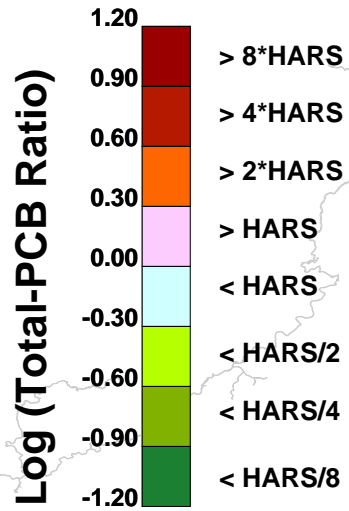


Figure 2. Total-PCB, Sediment Bed Depth Averaged, Calibration, 1998-2002

Total PCB Estimated as
 $2 * (Di+Tetra+Hexa+Octa)$
Results Doubled for DMT BSAF
to HARS Human Health Comparison

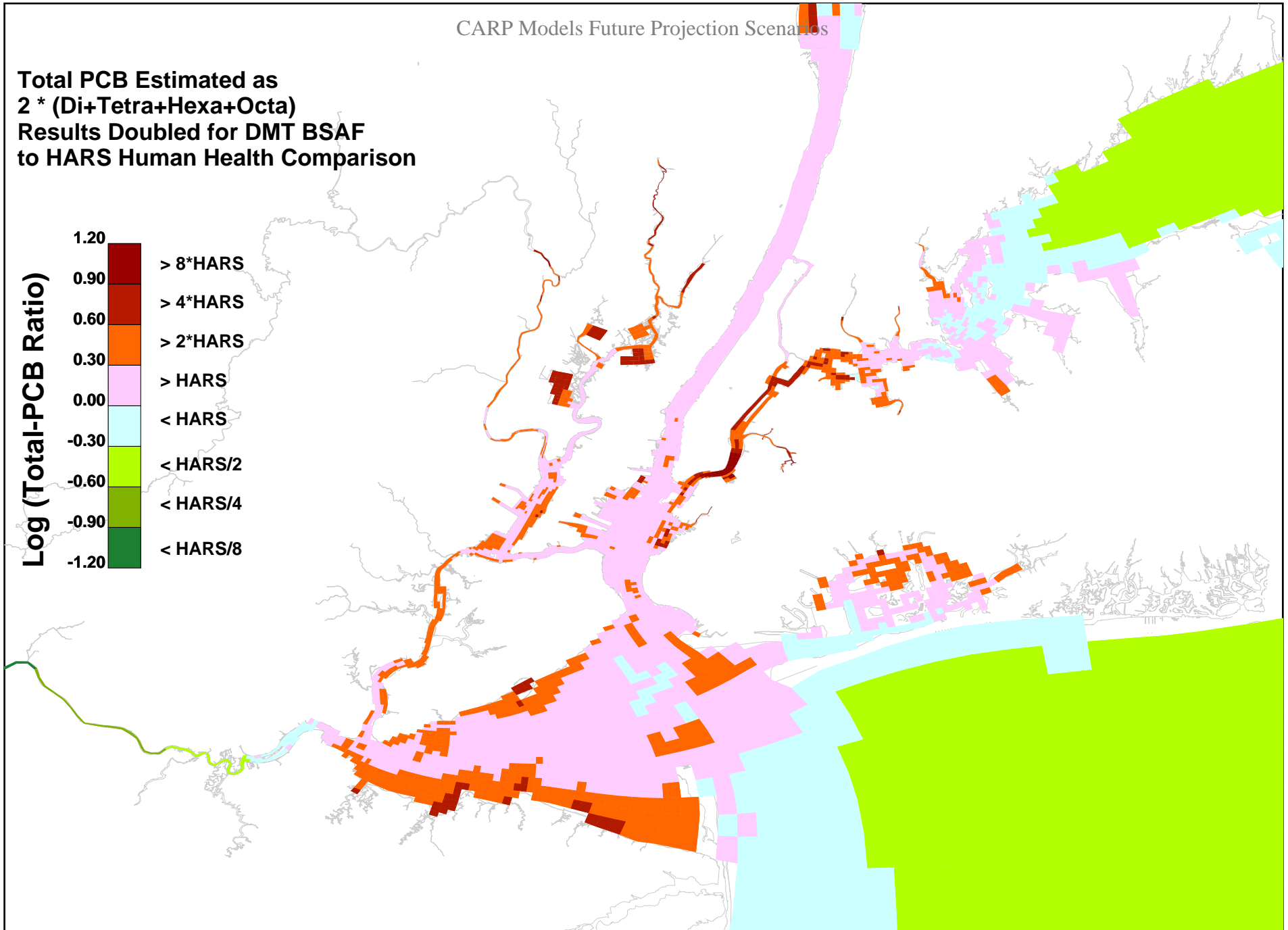
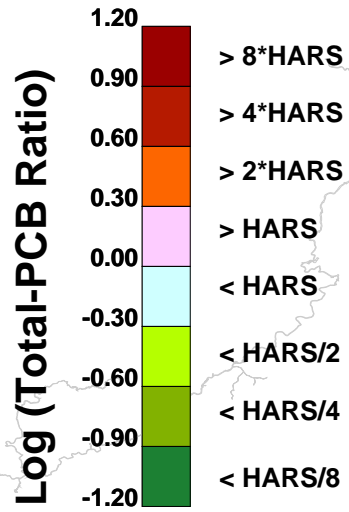


Figure 3. Total-PCB, Sediment Bed Depth Averaged, Projection PROJ01, 2022-2023

Total PCB Estimated as
 $2 * (Di+Tetra+Hexa+Octa)$
Results Doubled for DMT BSAF
to HARS Human Health Comparison

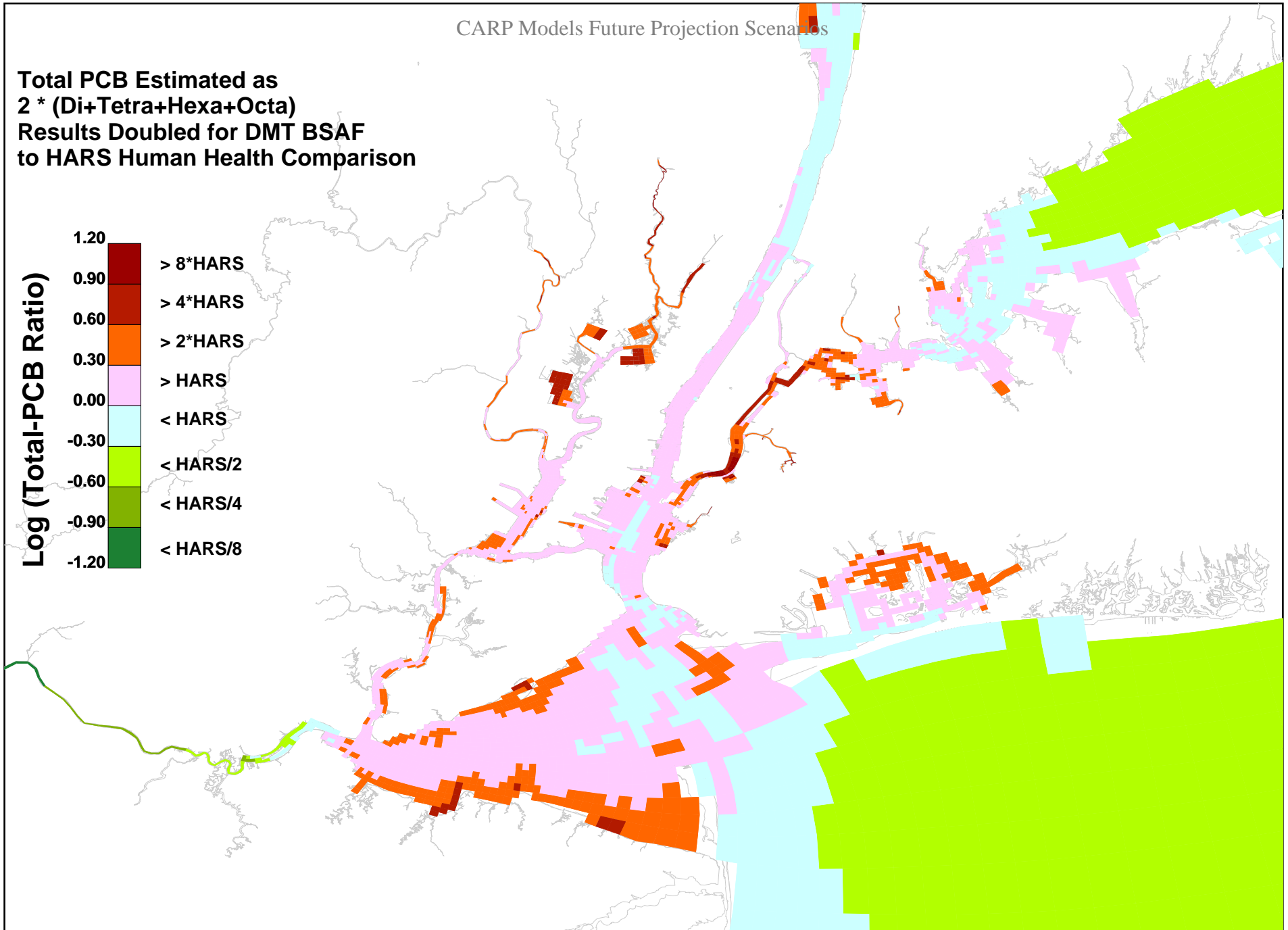
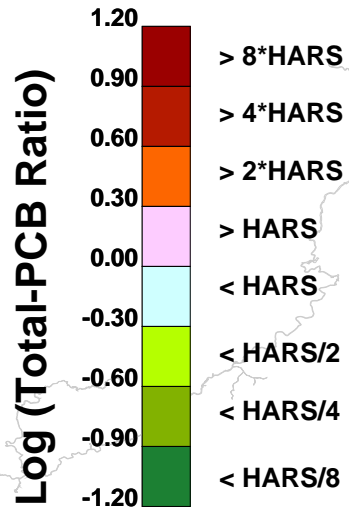


Figure 4. Total-PCB, Sediment Bed Depth Averaged, Projection PROJ01, 2029-2030

Total PCB Estimated as
 $2 * (Di+Tetra+Hexa+Octa)$
Results Doubled for DMT BSAF
to HARS Human Health Comparison

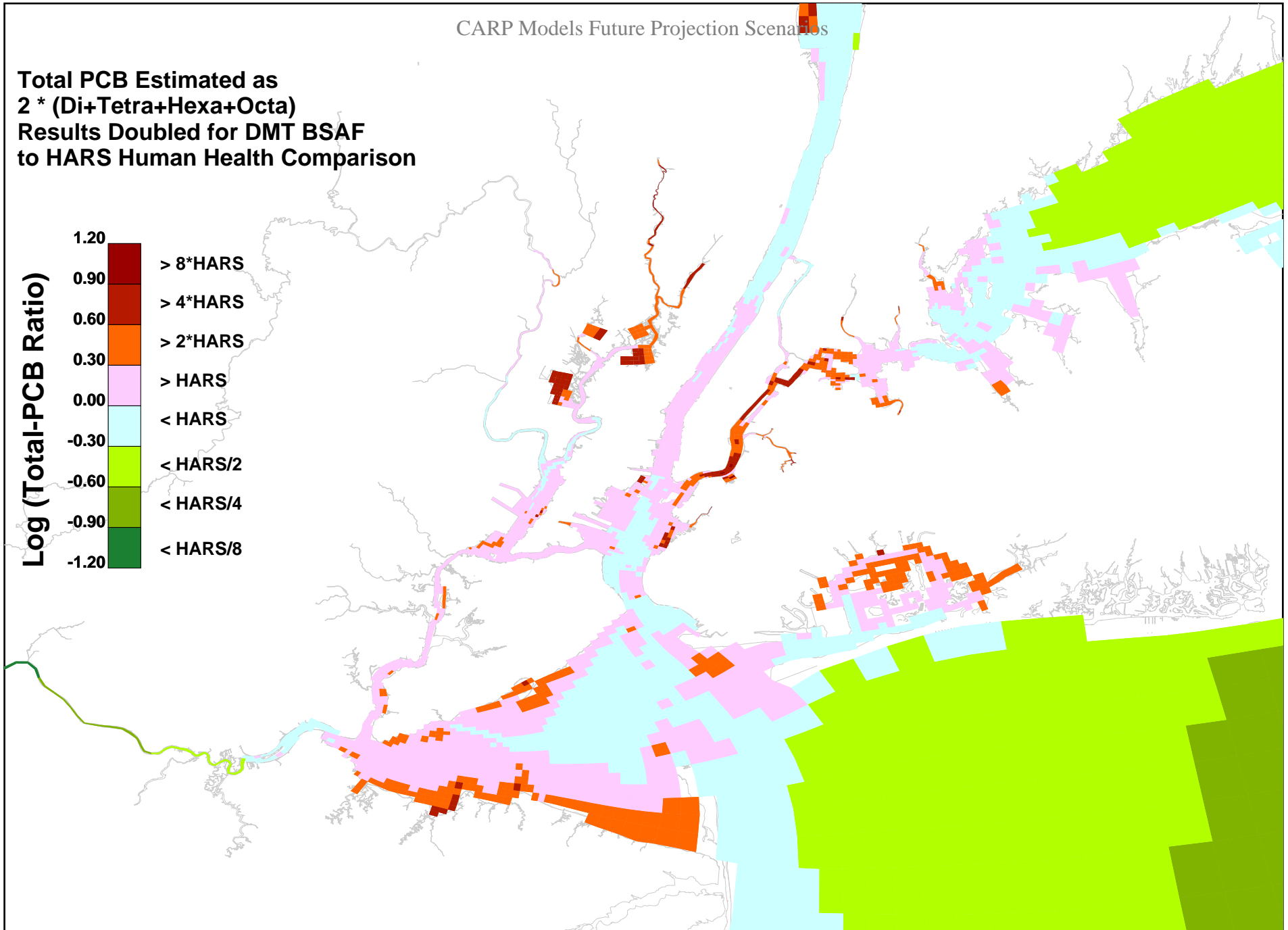
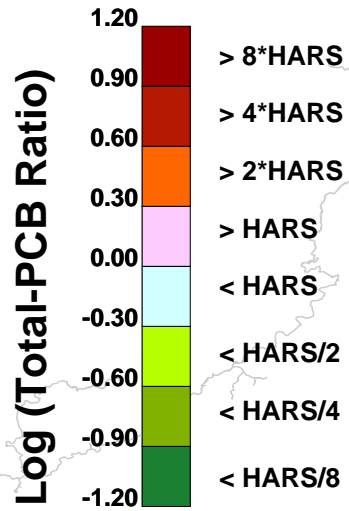


Figure 5. Total-PCB, Sediment Bed Depth Averaged, Projection PROJ01, 2038-2039

Total PCB Estimated as
 $2 * (Di+Tetra+Hexa+Octa)$
Results Doubled for DMT BSAF
to HARS Human Health Comparison

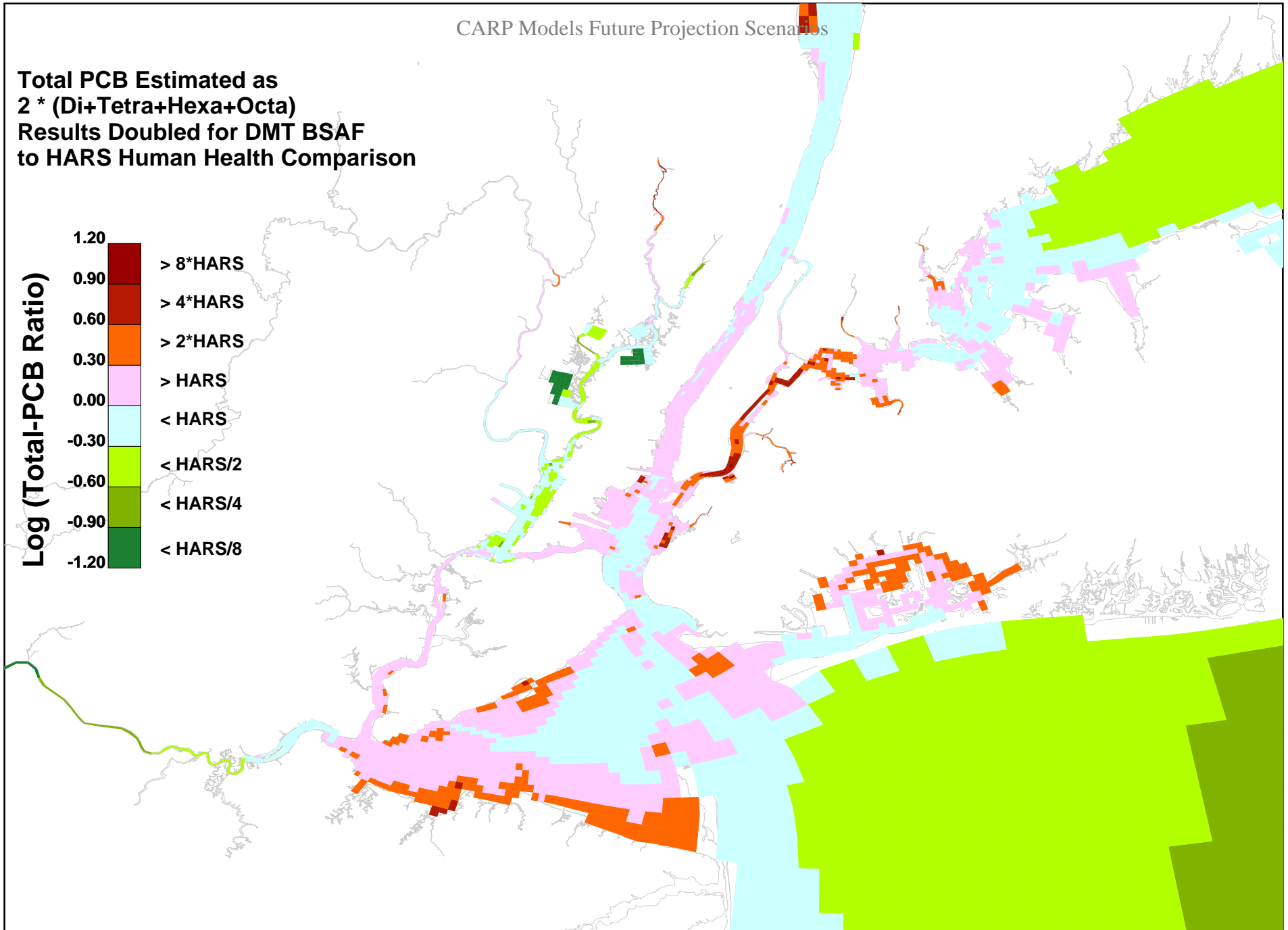
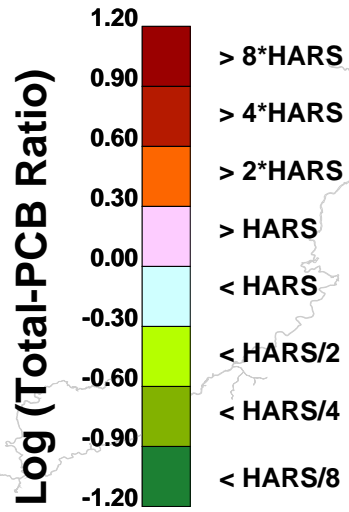


Figure 6. Total-PCB, Sediment Bed Depth Averaged, Projection PROJ02, 2038-2039