

## **APPENDIX 4**

### **Future Projection Scenarios HARS Suitability Ratio Maps, CARP 1 BSAFs**

- **2,3,7,8-TCDD (pages 2 to 7), Total PCB (pages 8 to 13), and 2,3,4,7,8-PCDF (pages 14 to 19)**
- **1998-99 annual average (pages 2, 8, and 14)**
- **1998-2002 four-year average (pages 3, 9, and 15)**
- **2022-23 current year annual average (pages 4, 10, and 16)**
- **2029-2030 future without further action annual average (pages 5, 11, and 17)**
- **2038-39 future nine years after simulated completion of Lower Passaic River Superfund RODS (pages 6, 12, and 18)**
- **2038-39 future nine years after simulated completion of Lower Passaic River Superfund RODS plus complete remediation of the Lower Hackensack River and Newark Bay Study Area (pages 7, 13, and 19)**

Results for CARP1 BSAF  
to HARS Ecological/Matrix Comparison

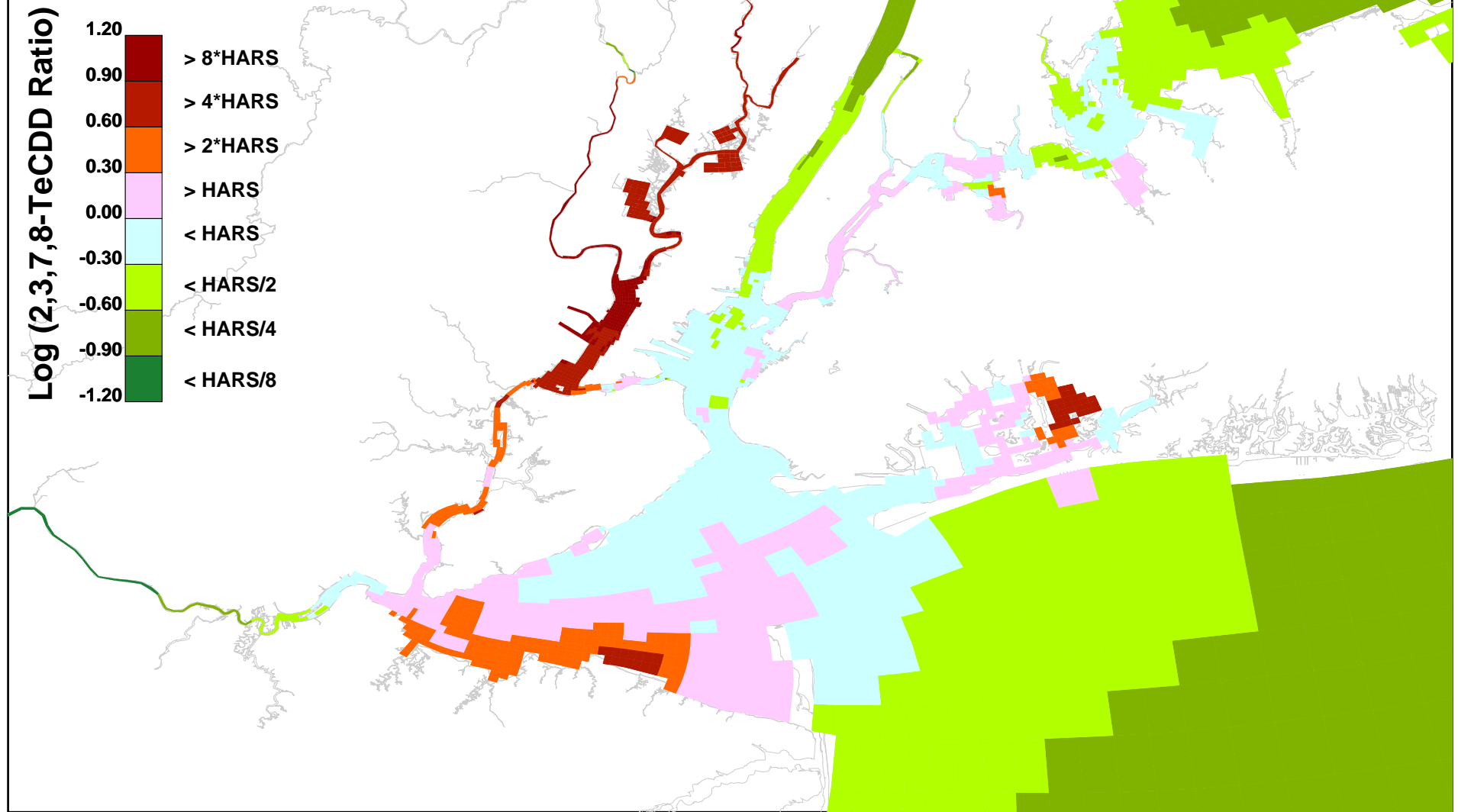


Figure 1. 2,3,7,8-TeCDD, Sediment Bed Depth Averaged, Calibration, 1998-1999

Results for CARP1 BSAF  
to HARS Ecological/Matrix Comparison

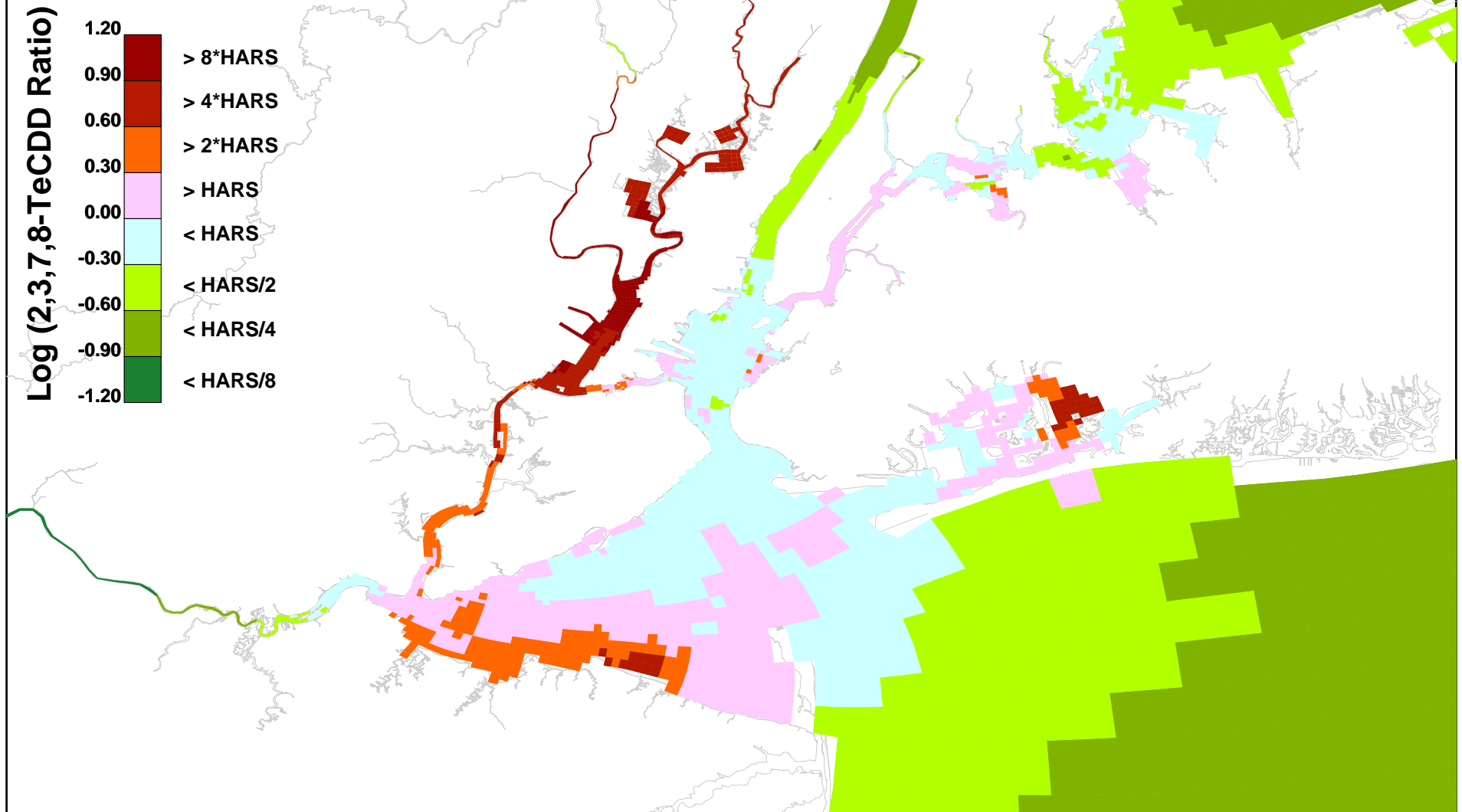


Figure 2. 2,3,7,8-TeCDD, Sediment Bed Depth Averaged, Calibration, 1998-2002

Results for CARP1 BSAF  
to HARS Ecological/Matrix Comparison

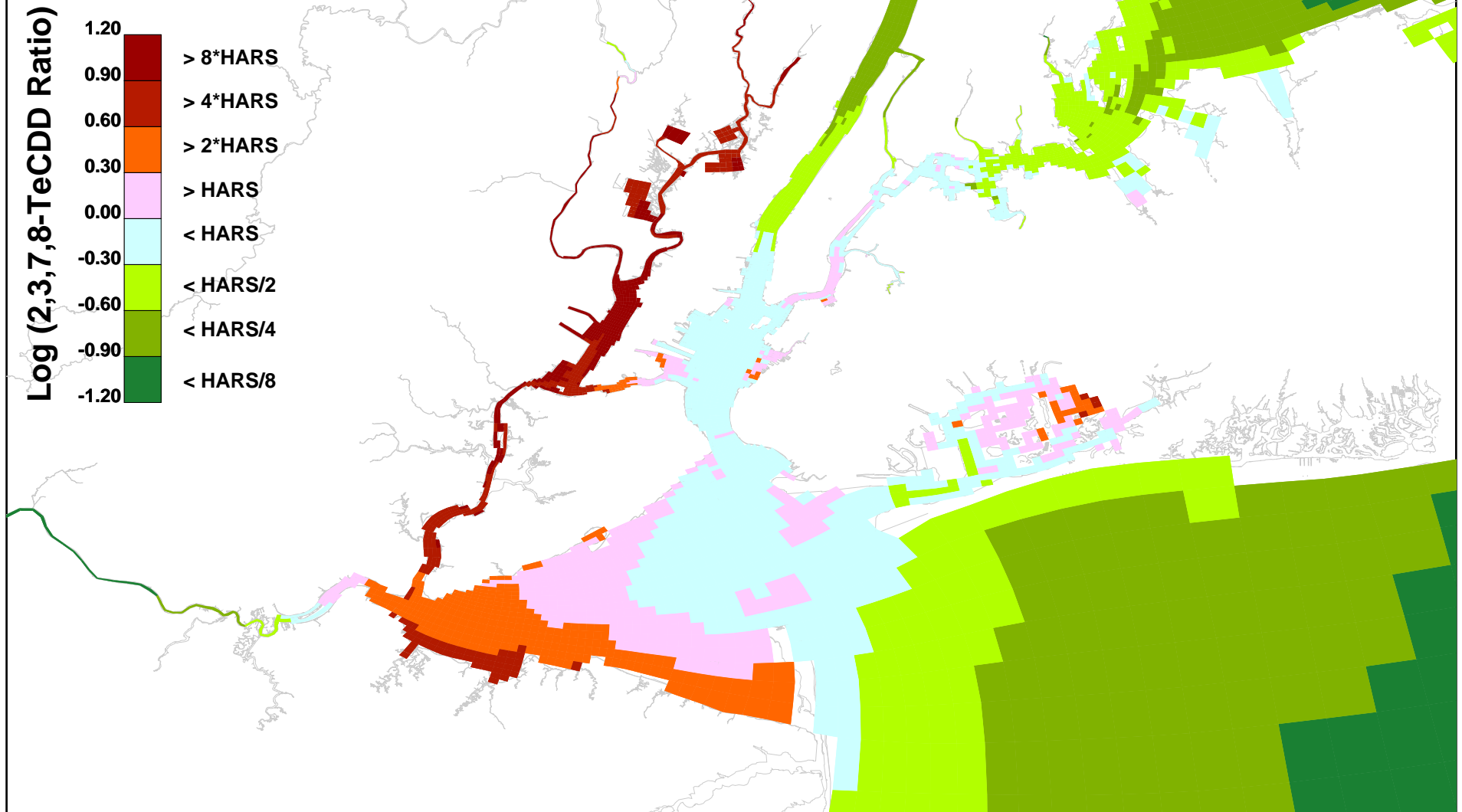


Figure 3. 2,3,7,8-TeCDD, Sediment Bed Depth Averaged, Projection PROJ01, 2022-2023

Results for CARP1 BSAF  
to HARS Ecological/Matrix Comparison

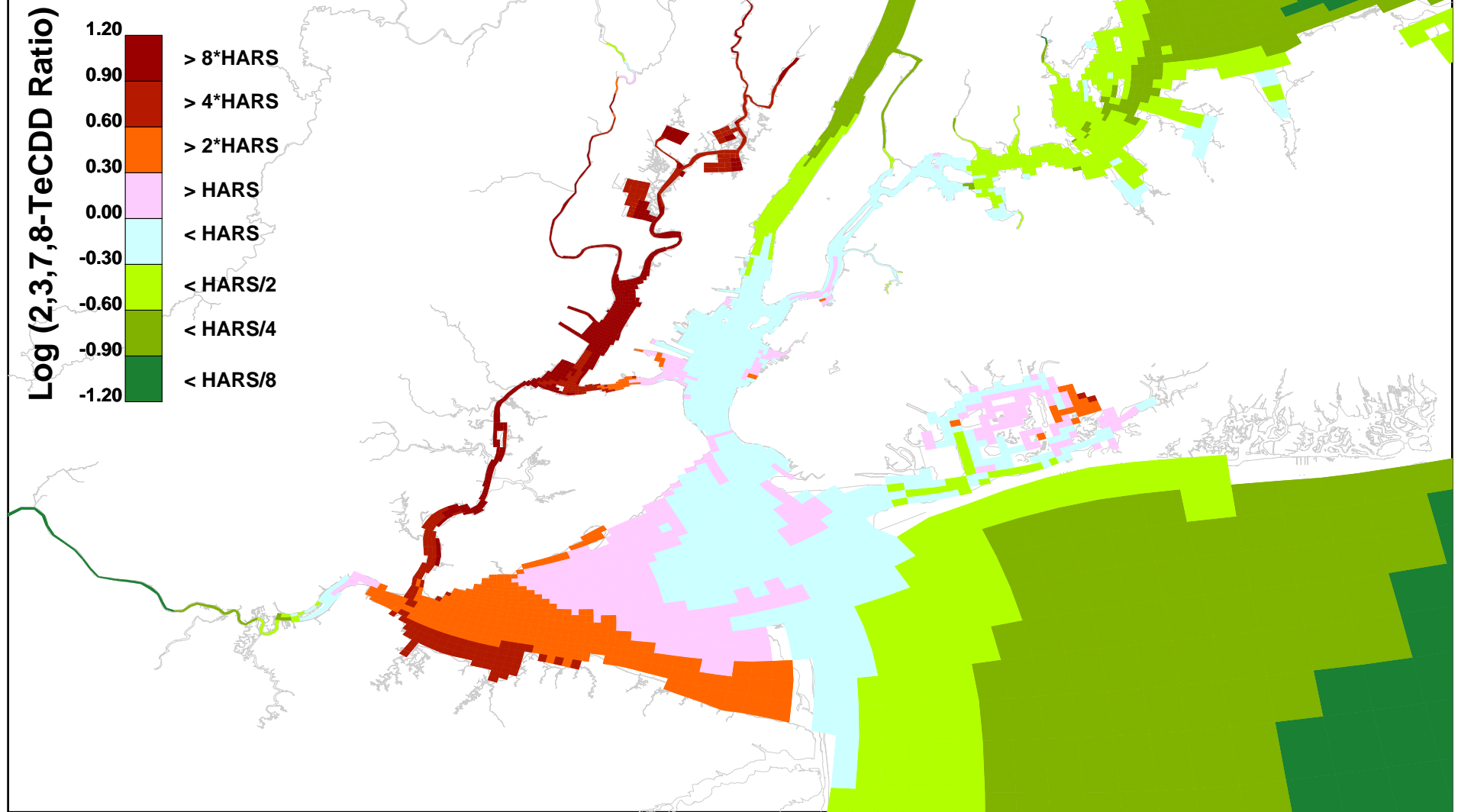


Figure 4. 2,3,7,8-TeCDD, Sediment Bed Depth Averaged, Projection PROJ01, 2029-2030

Results for CARP1 BSAF  
to HARS Ecological/Matrix Comparison

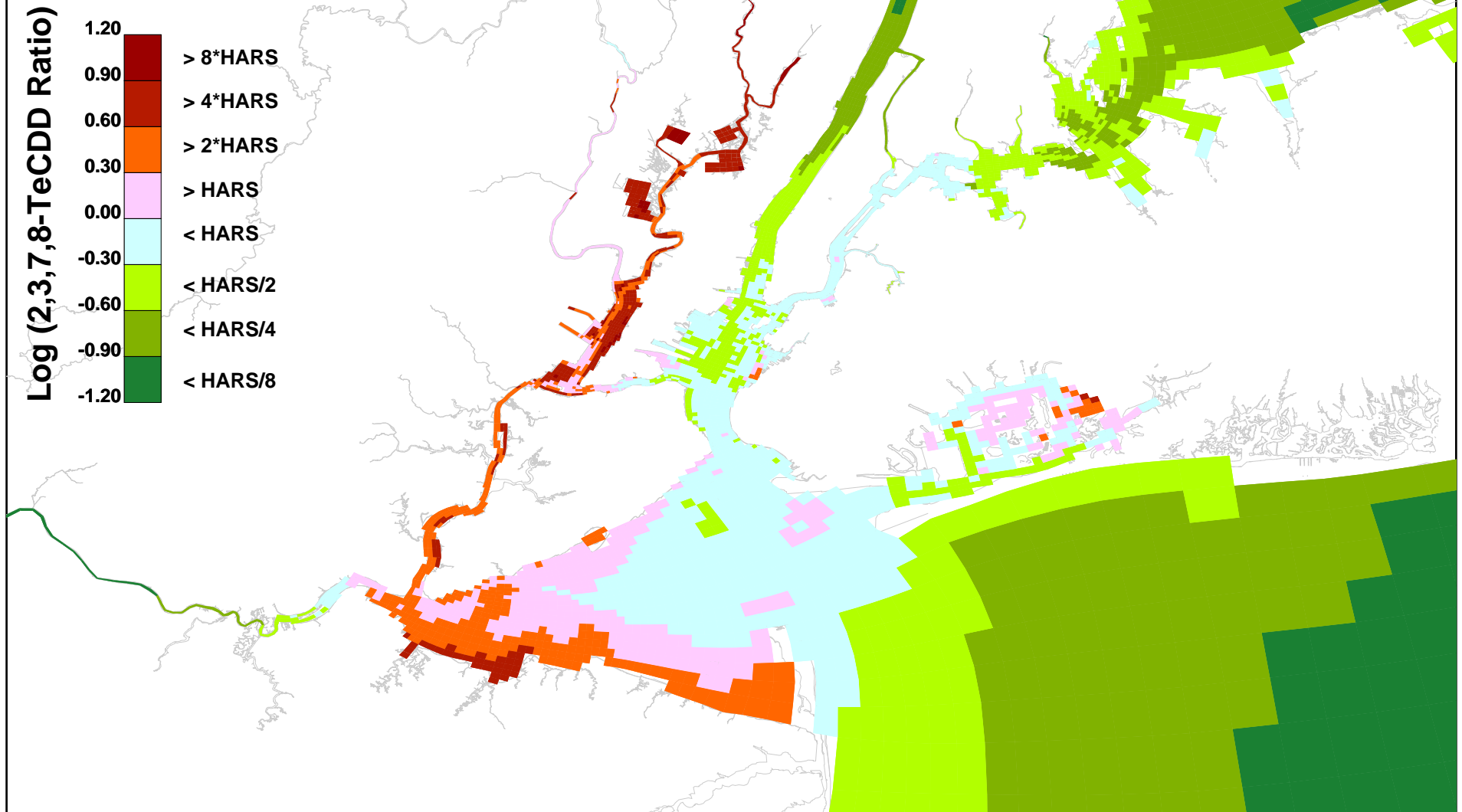


Figure 5. 2,3,7,8-TeCDD, Sediment Bed Depth Averaged, Projection PROJ01, 2038-2039

Results for CARP1 BSAF  
to HARS Ecological/Matrix Comparison

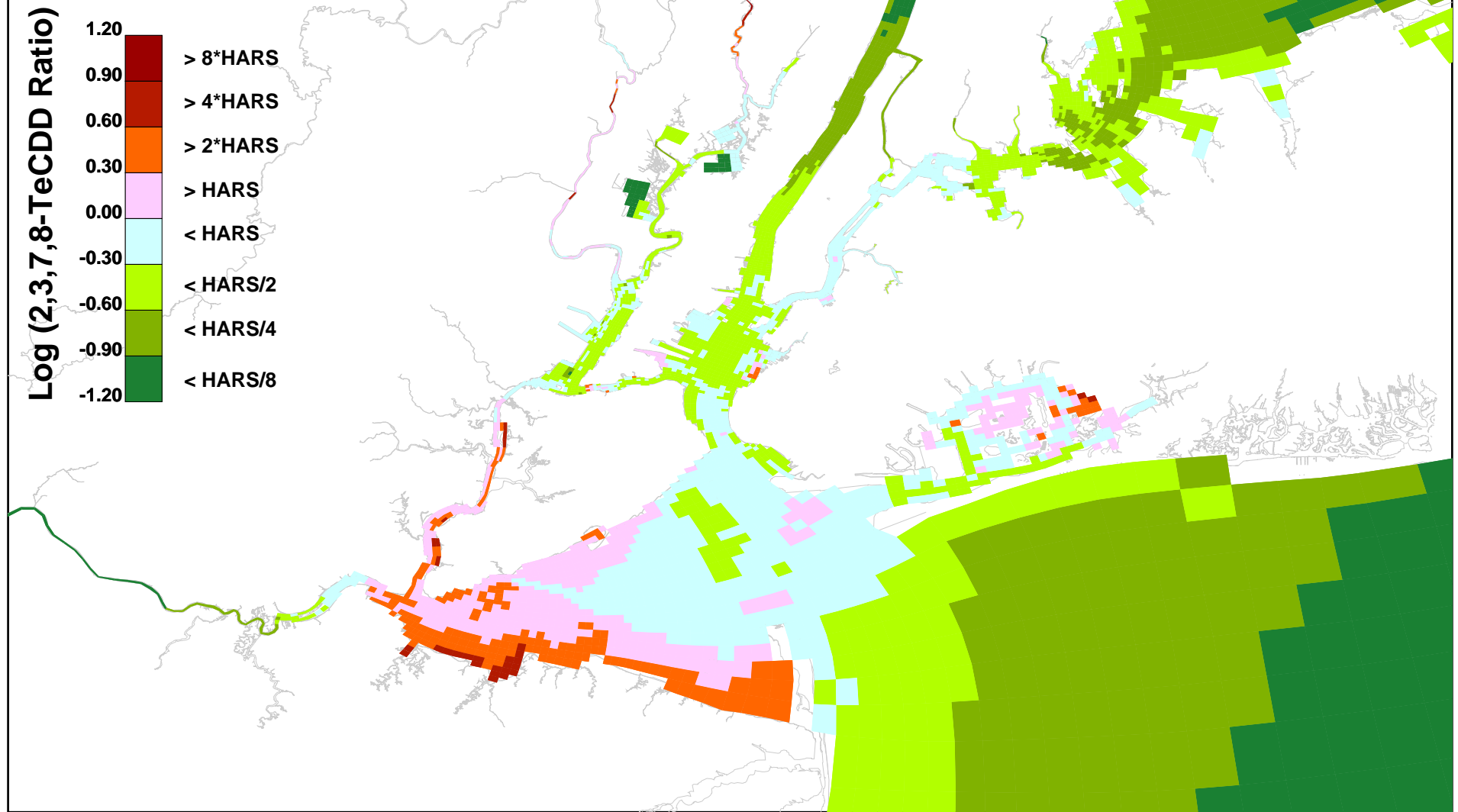


Figure 6. 2,3,7,8-TeCDD, Sediment Bed Depth Averaged, Projection PROJ02, 2038-2039

Total PCB Estimated as  
 $2 * (Di+Tetra+Hexa+Octa)$   
Results for CARP1 BSAF  
to HARS Human Health Comparison

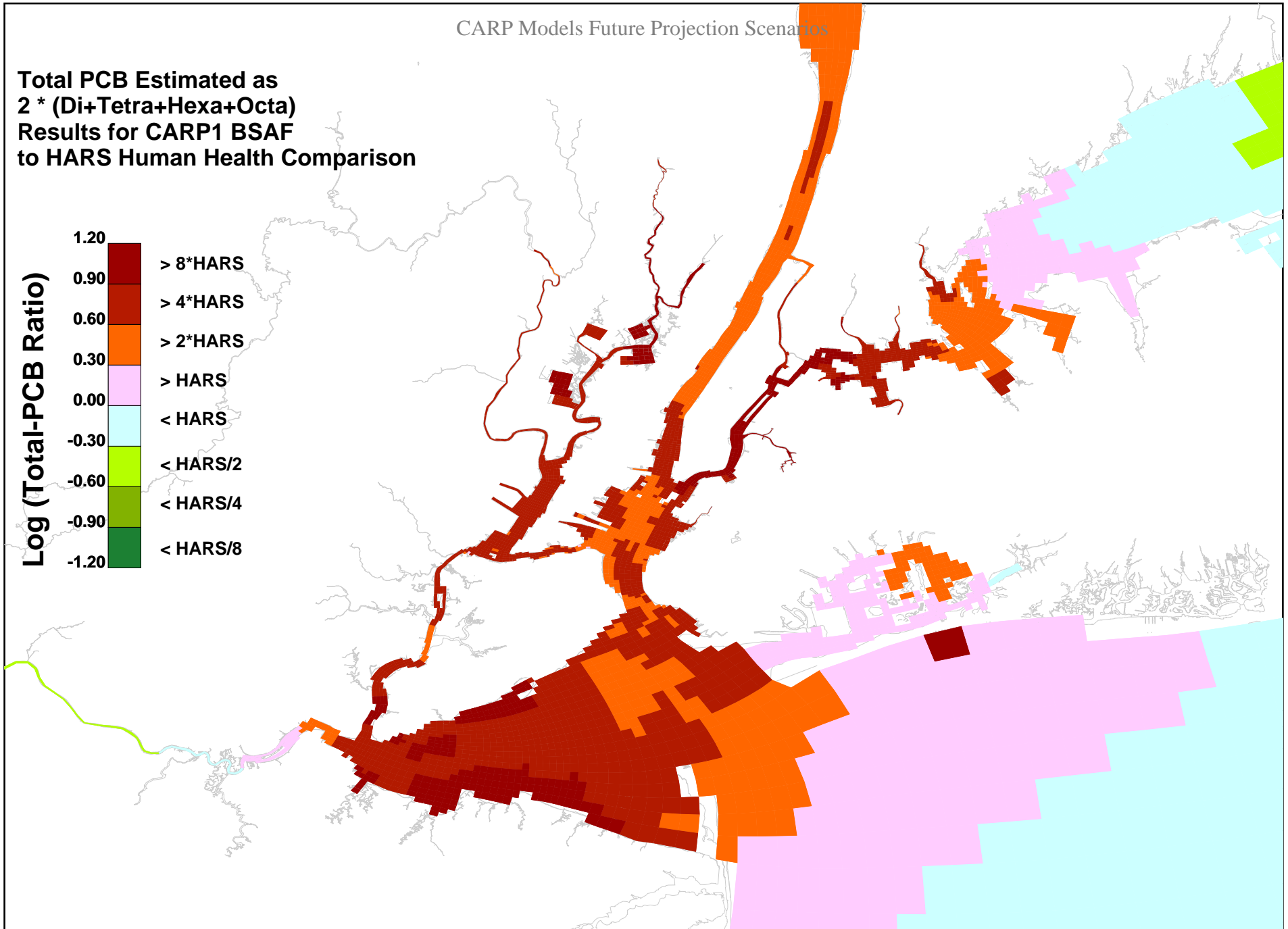
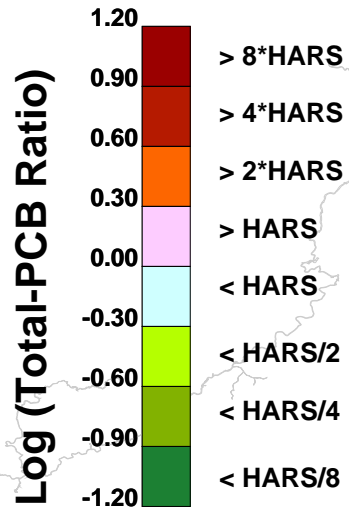
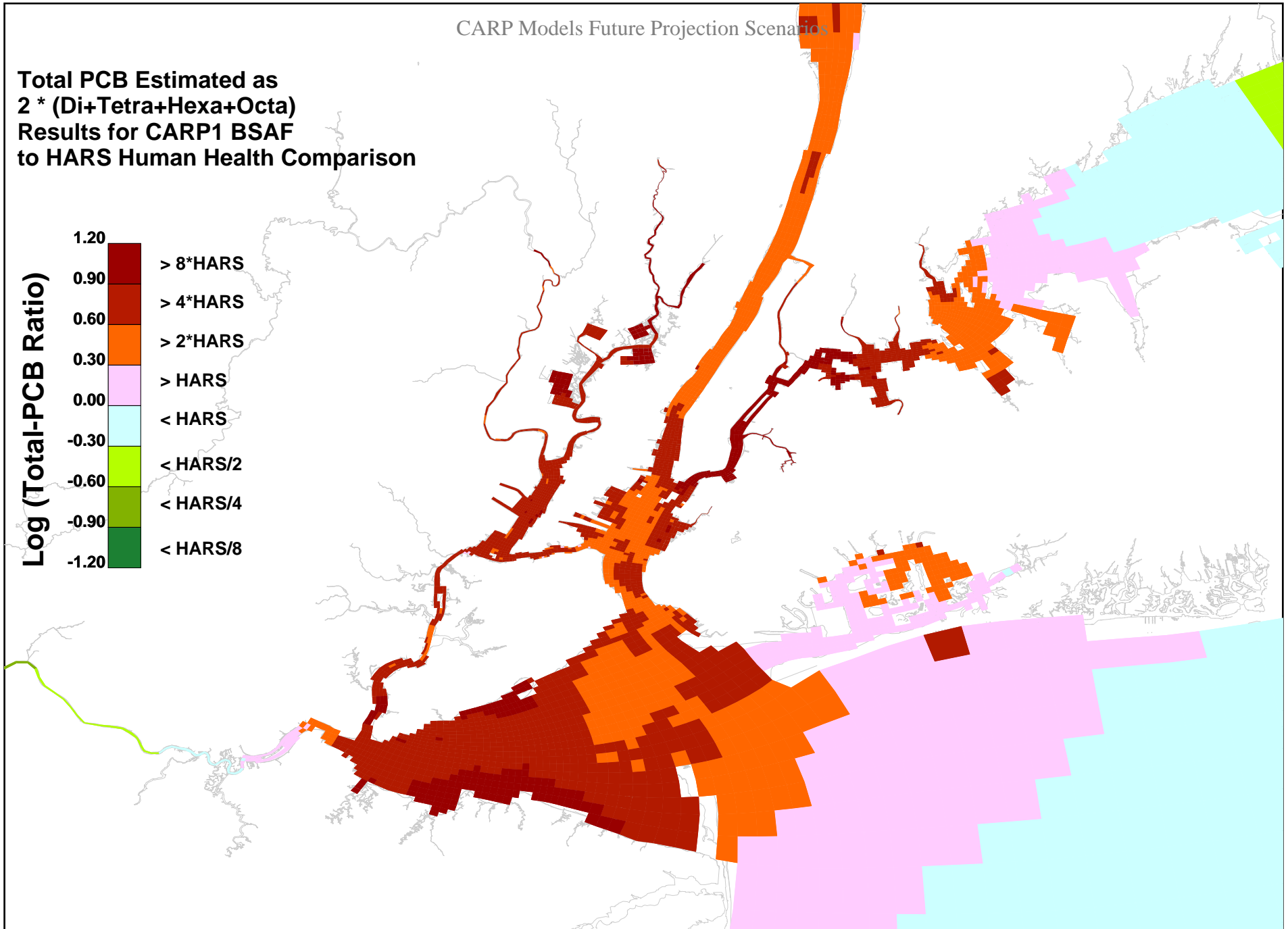
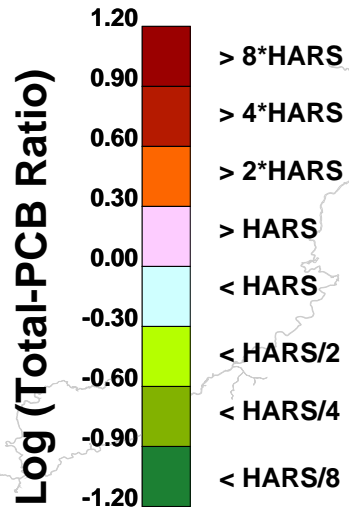


Figure 1. Total-PCB, Sediment Bed Depth Averaged, Calibration, 1998-1999

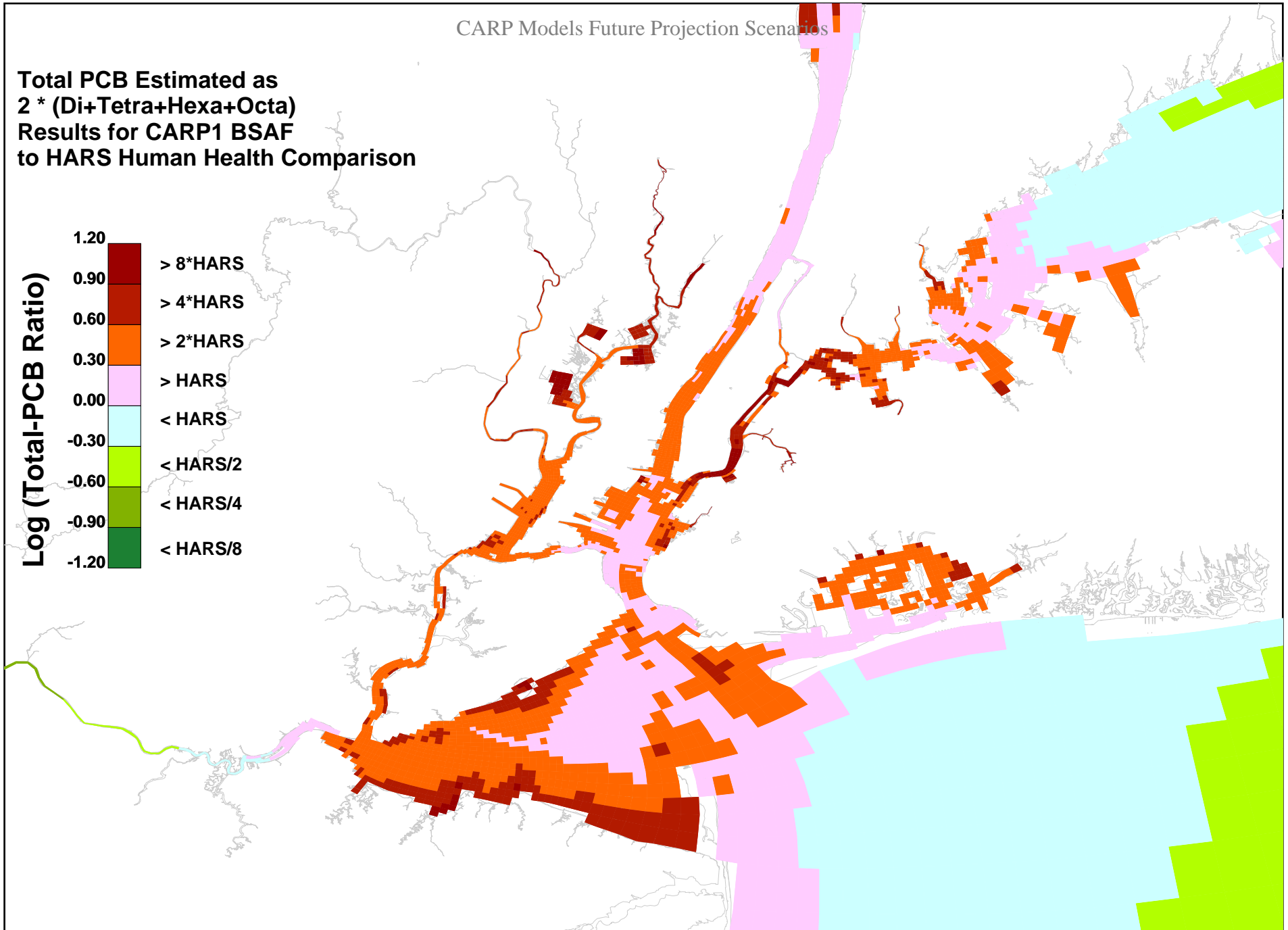
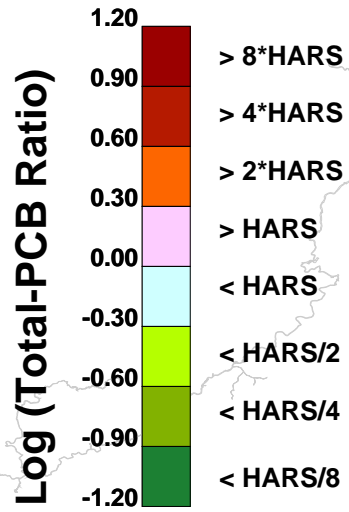


**Total PCB Estimated as  
2 \* (Di+Tetra+Hexa+Octa)  
Results for CARP1 BSAF  
to HARS Human Health Comparison**



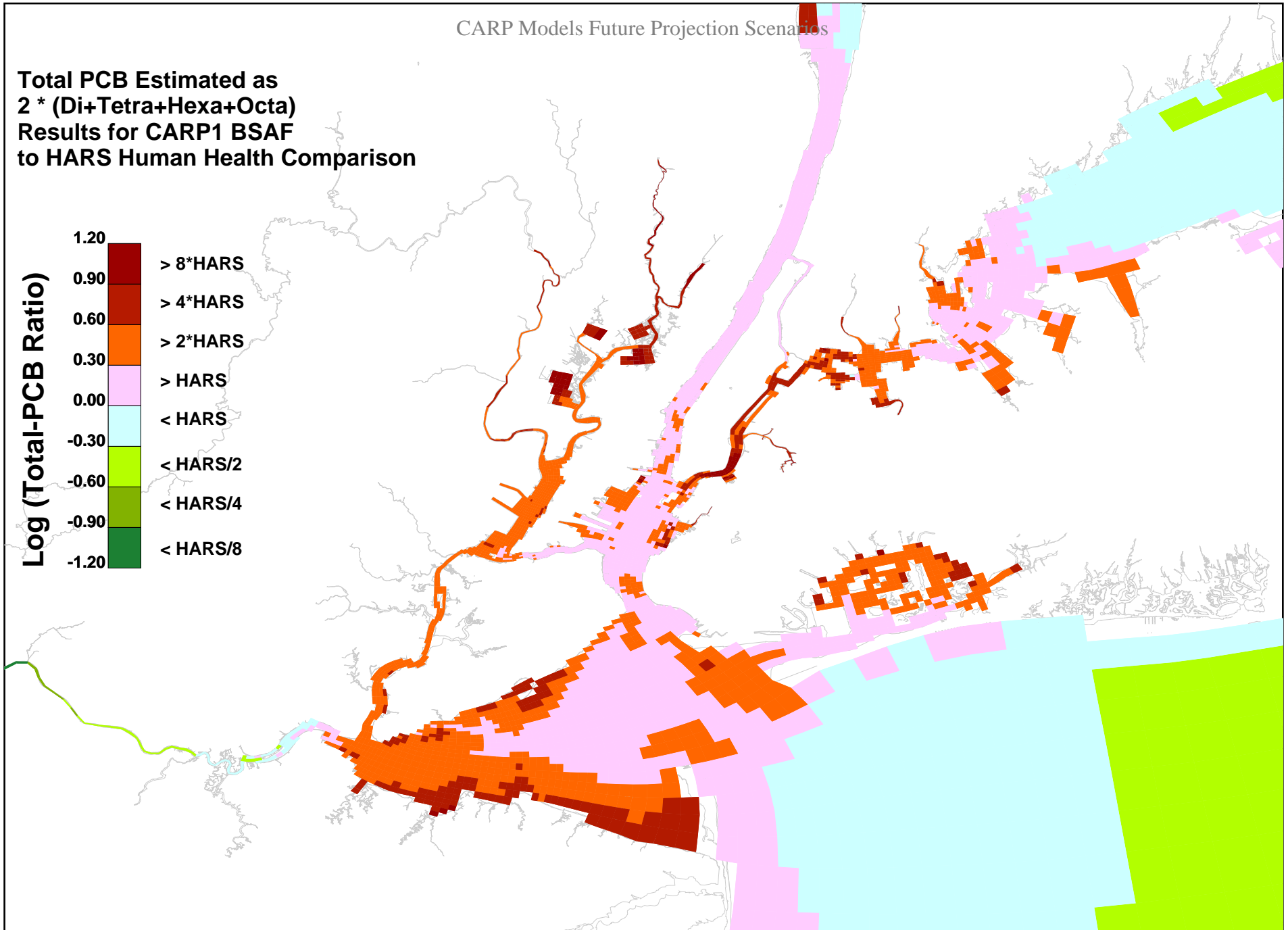
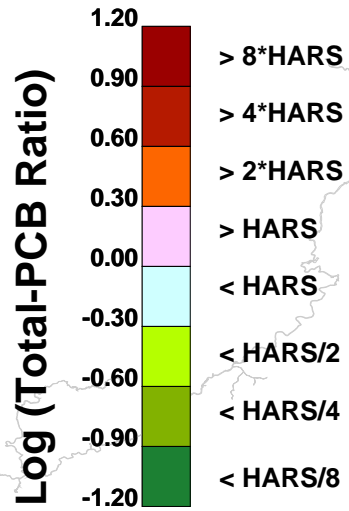
**Figure 2. Total-PCB, Sediment Bed Depth Averaged, Calibration, 1998-2002**

**Total PCB Estimated as  
2 \* (Di+Tetra+Hexa+Octa)  
Results for CARP1 BSAF  
to HARS Human Health Comparison**



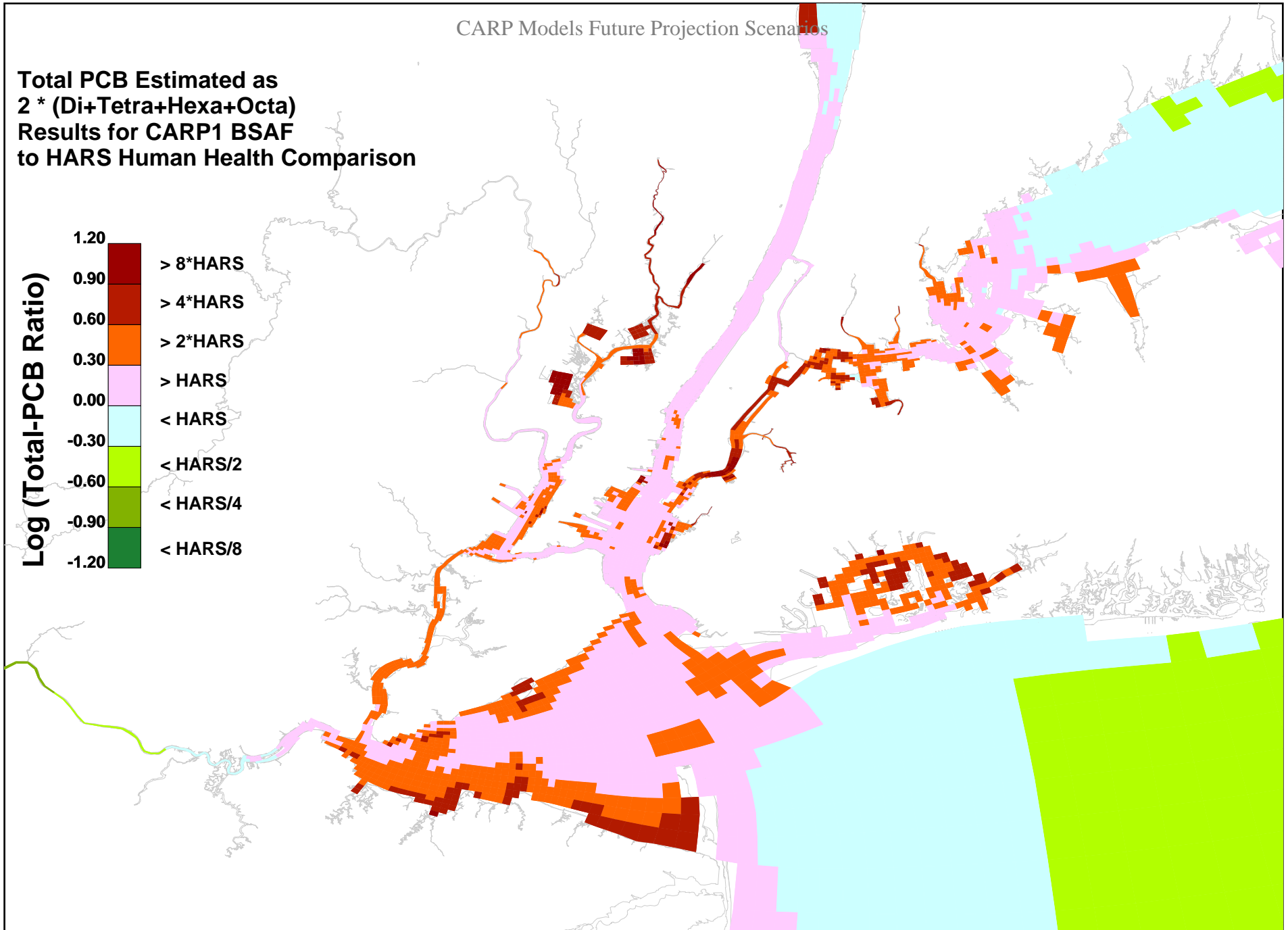
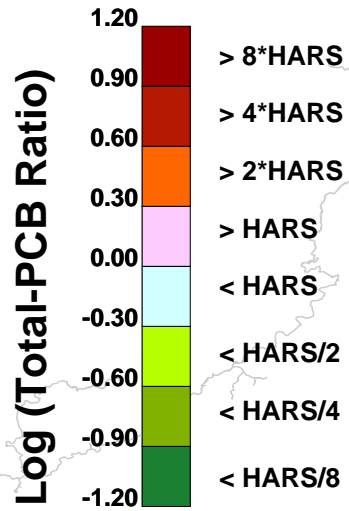
**Figure 3. Total-PCB, Sediment Bed Depth Averaged, Projection PROJ01, 2022-2023**

**Total PCB Estimated as  
2 \* (Di+Tetra+Hexa+Octa)  
Results for CARP1 BSAF  
to HARS Human Health Comparison**



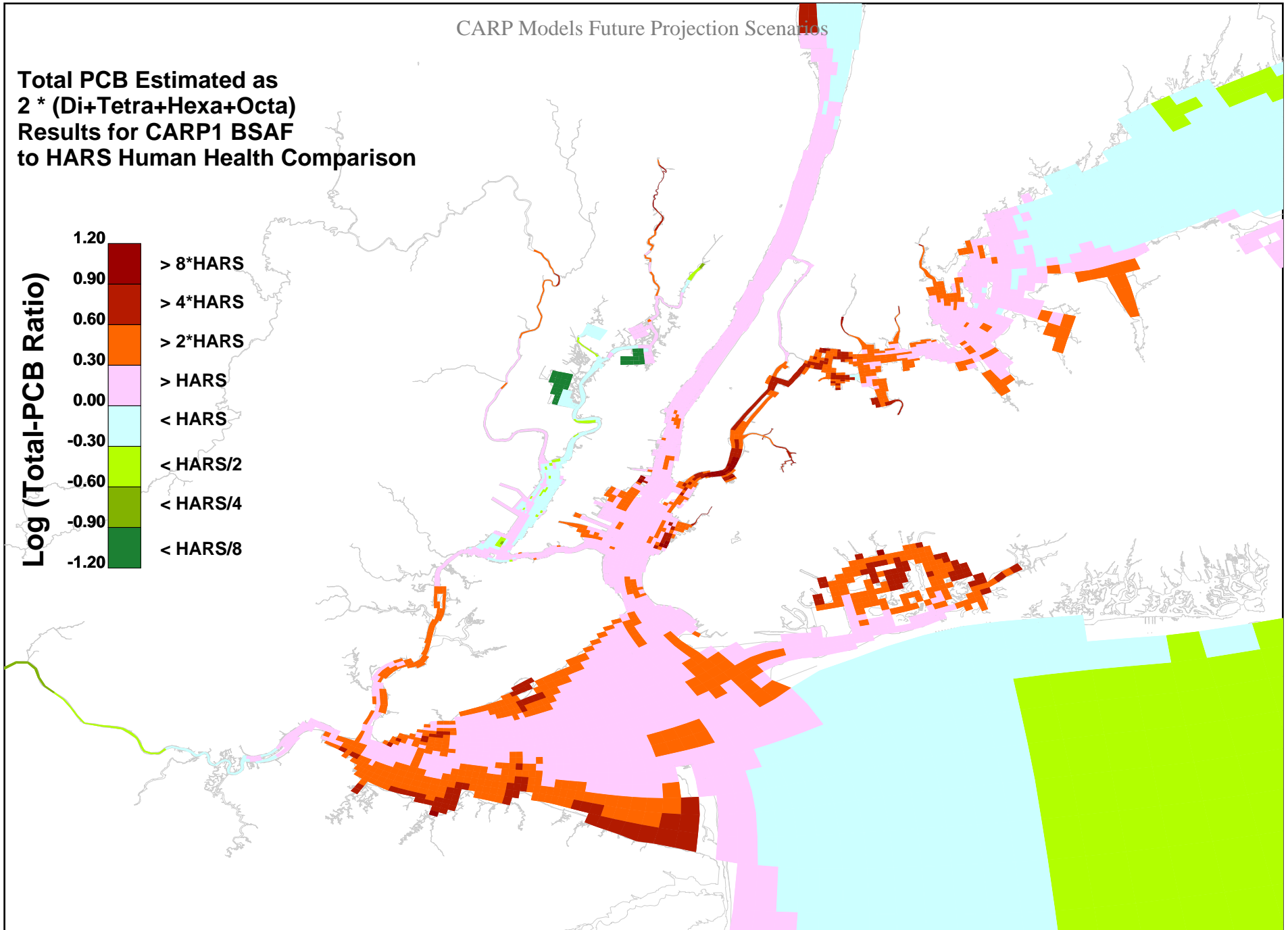
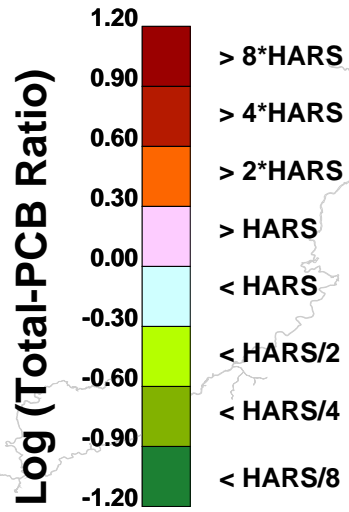
**Figure 4. Total-PCB, Sediment Bed Depth Averaged, Projection PROJ01, 2029-2030**

**Total PCB Estimated as  
2 \* (Di+Tetra+Hexa+Octa)  
Results for CARP1 BSAF  
to HARS Human Health Comparison**



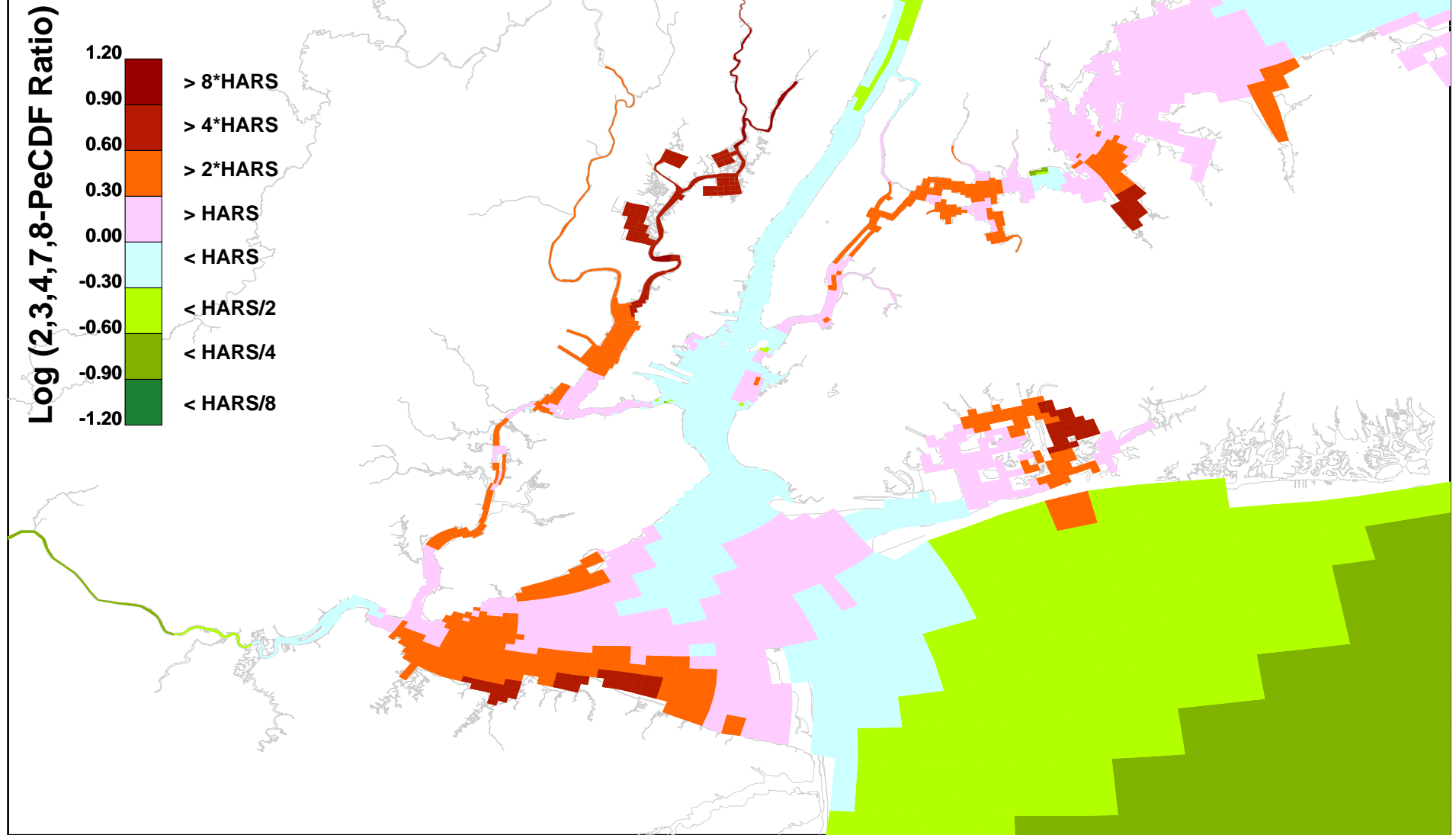
**Figure 5. Total-PCB, Sediment Bed Depth Averaged, Projection PROJ01, 2038-2039**

**Total PCB Estimated as  
2 \* (Di+Tetra+Hexa+Octa)  
Results for CARP1 BSAF  
to HARS Human Health Comparison**



**Figure 6. Total-PCB, Sediment Bed Depth Averaged, Projection PROJ02, 2038-2039**

**Results for CARP1 BSAF  
to HARS Ecological/Matrix Comparison**



**Figure 1. 2,3,4,7,8-PeCDF, Sediment Bed Depth Averaged, Calibration, 1998-1999**

Results for CARP1 BSAF  
to HARS Ecological/Matrix Comparison

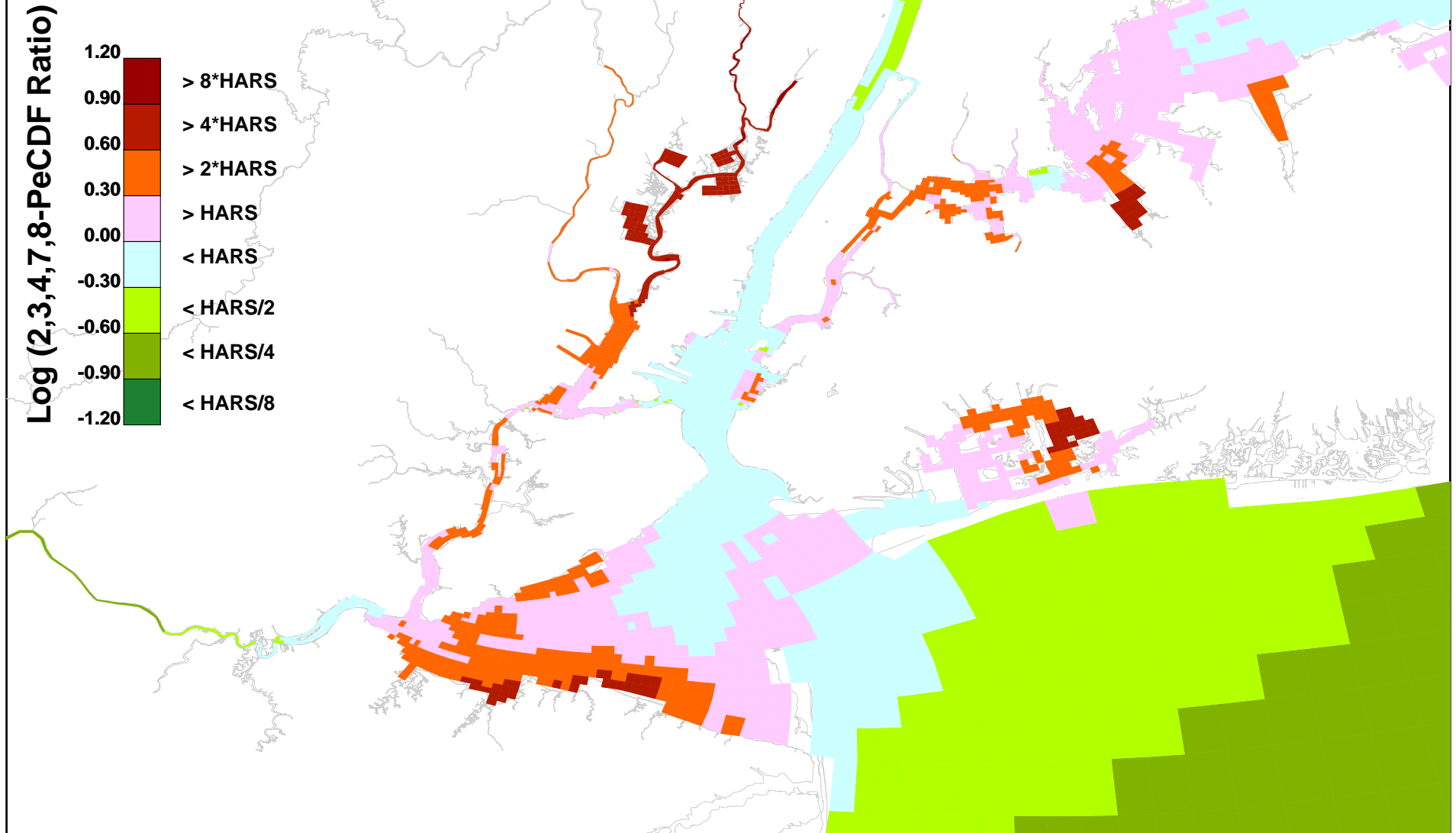


Figure 2. 2,3,4,7,8-PeCDF, Sediment Bed Depth Averaged, Calibration, 1998-2002

Results for CARP1 BSAF  
to HARS Ecological/Matrix Comparison

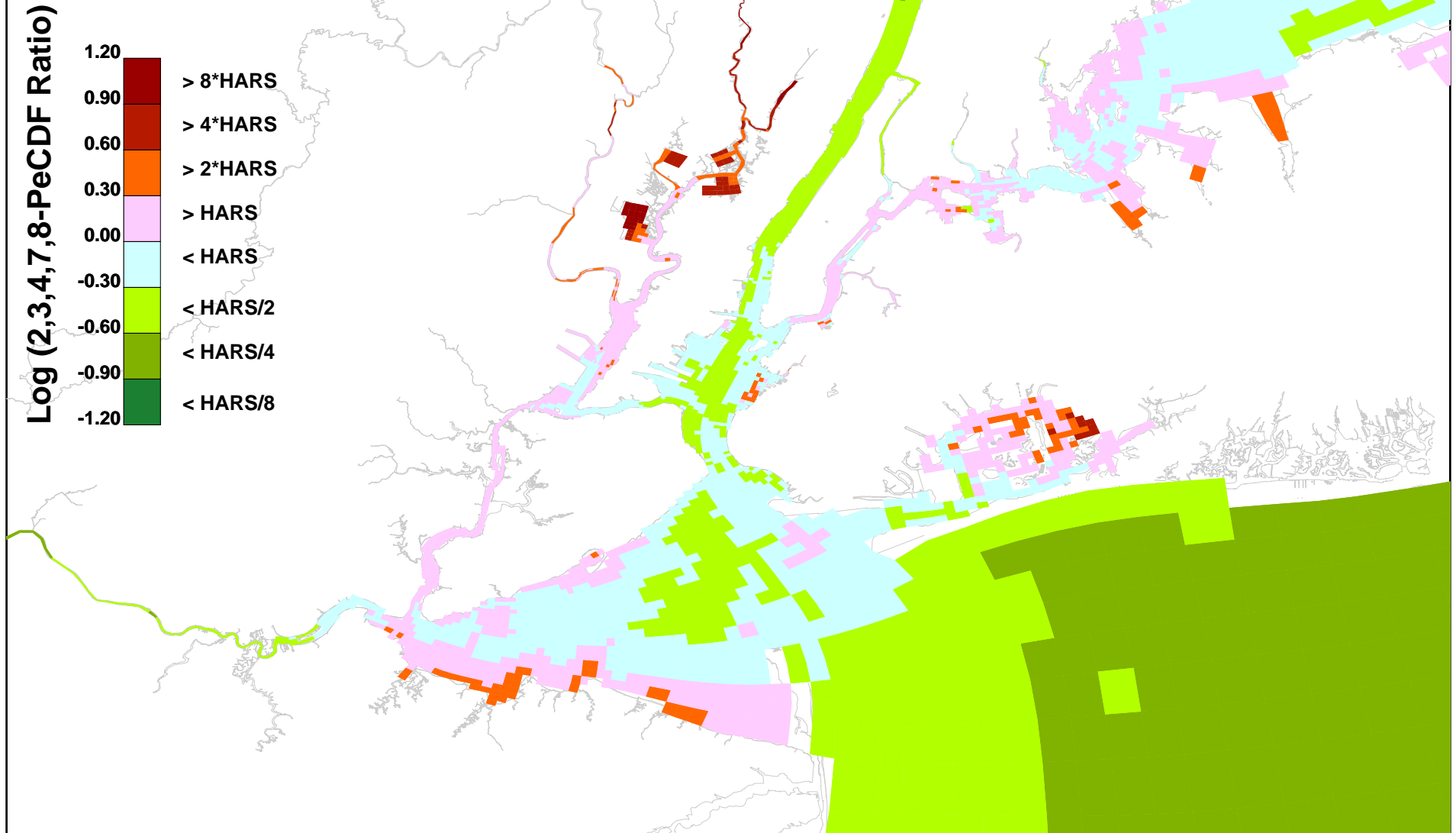


Figure 3. 2,3,4,7,8-PeCDF, Sediment Bed Depth Averaged, Projection PROJ01, 2022-2023



Results for CARP1 BSAF  
to HARS Ecological/Matrix Comparison

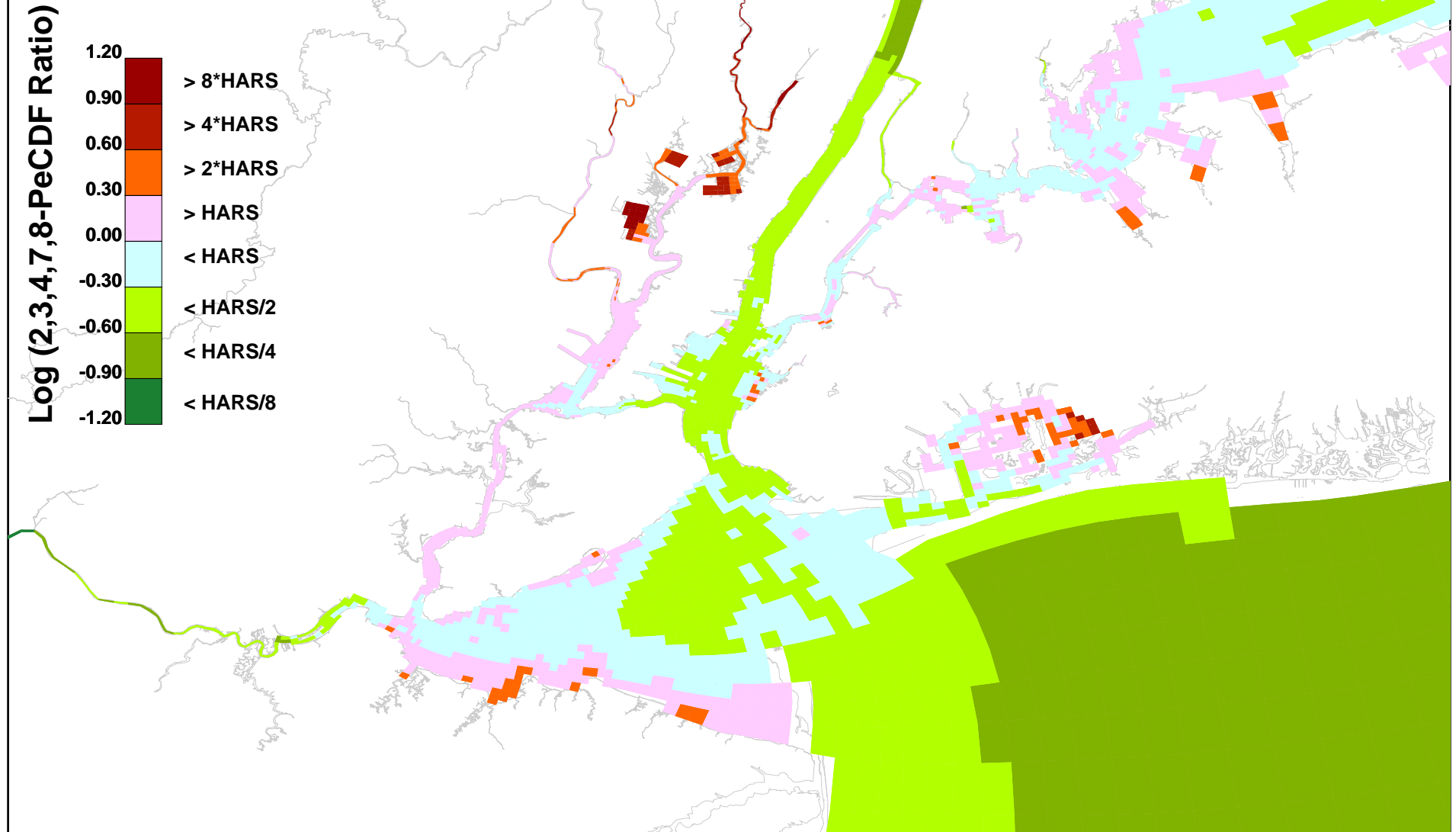


Figure 4. 2,3,4,7,8-PeCDF, Sediment Bed Depth Averaged, Projection PROJ01, 2029-2030

Results for CARP1 BSAF  
to HARS Ecological/Matrix Comparison

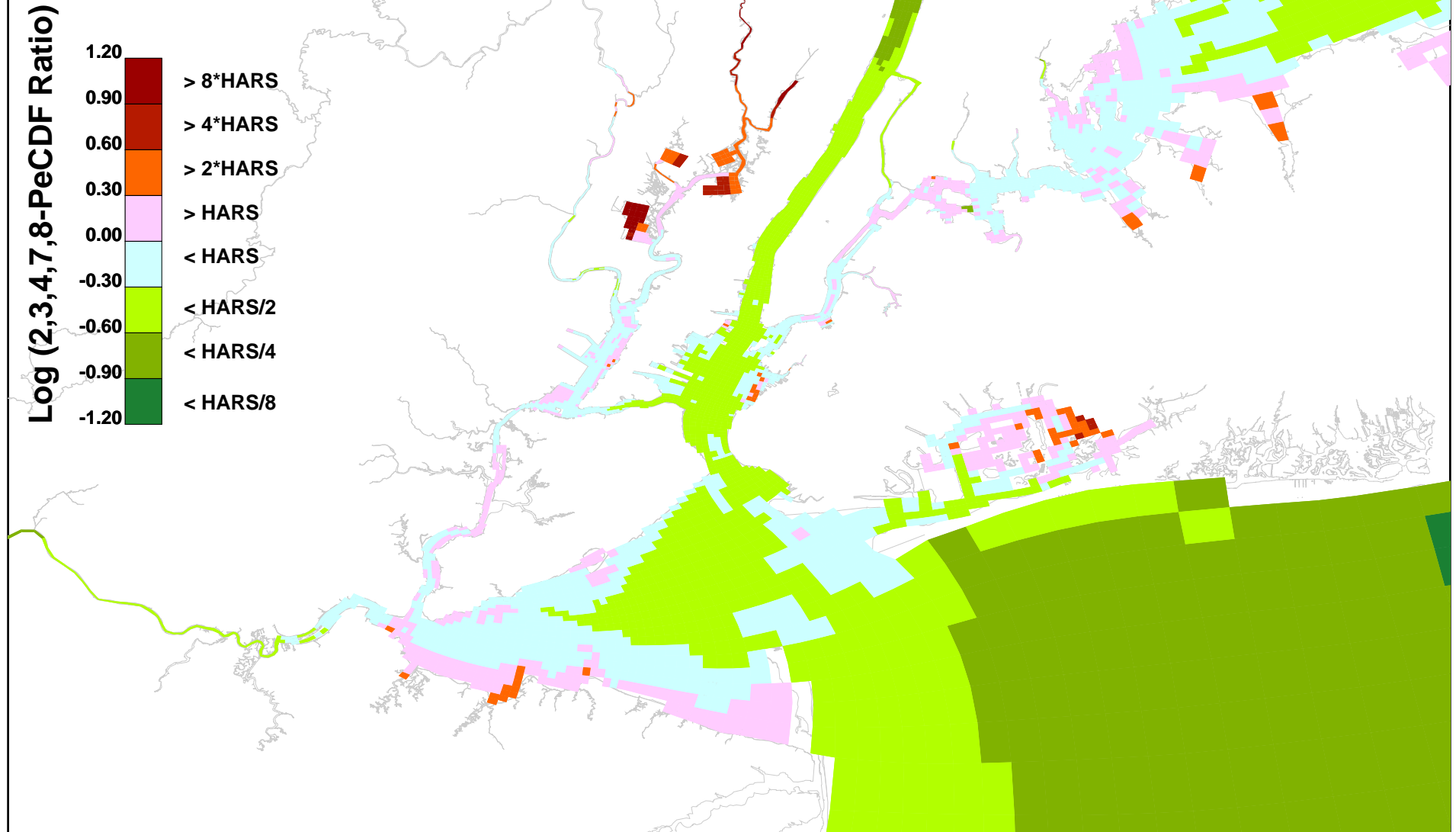


Figure 5. 2,3,4,7,8-PeCDF, Sediment Bed Depth Averaged, Projection PROJ01, 2038-2039

Results for CARP1 BSAF  
to HARS Ecological/Matrix Comparison

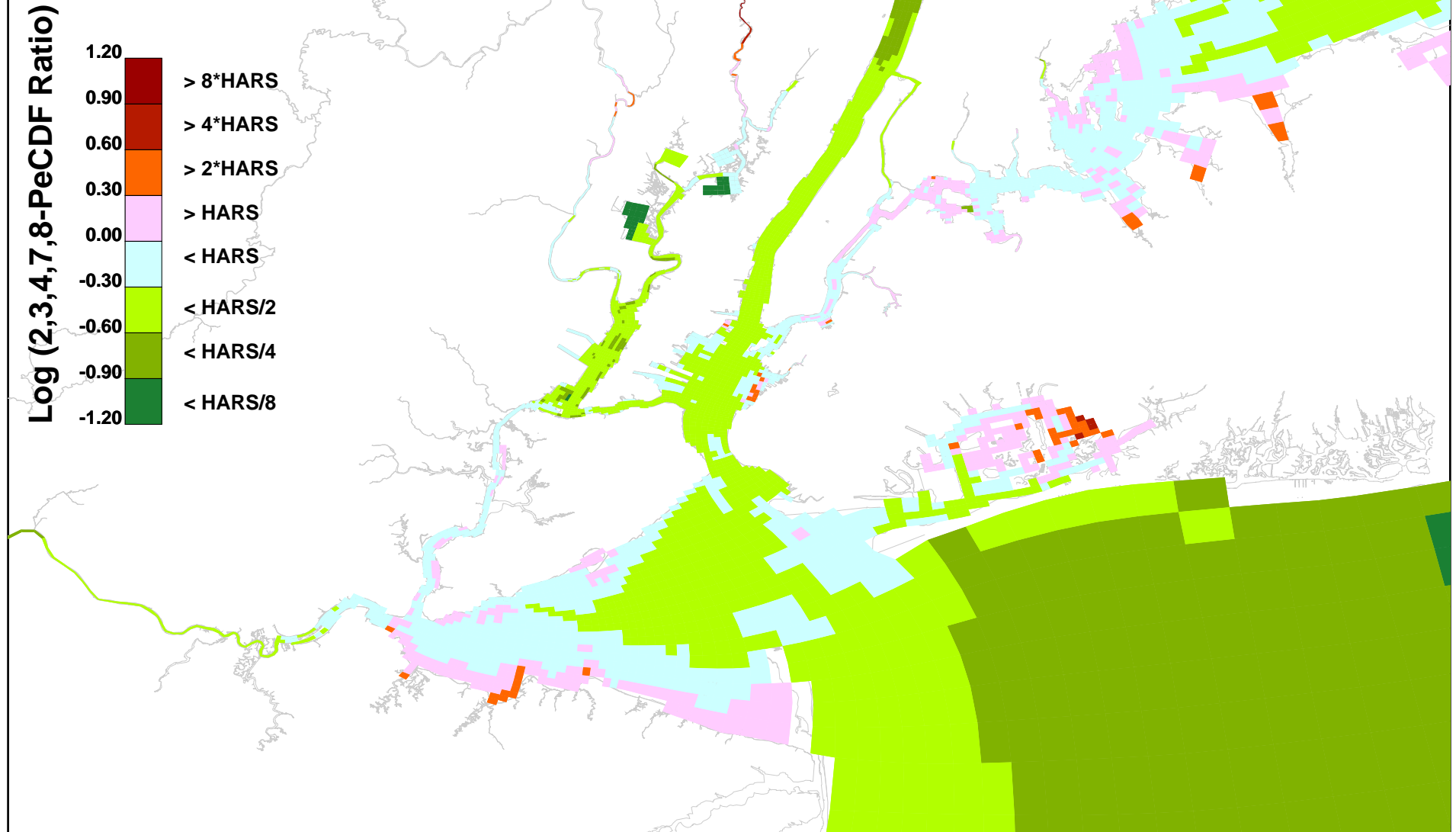


Figure 6. 2,3,4,7,8-PeCDF, Sediment Bed Depth Averaged, Projection PROJ02, 2038-2039